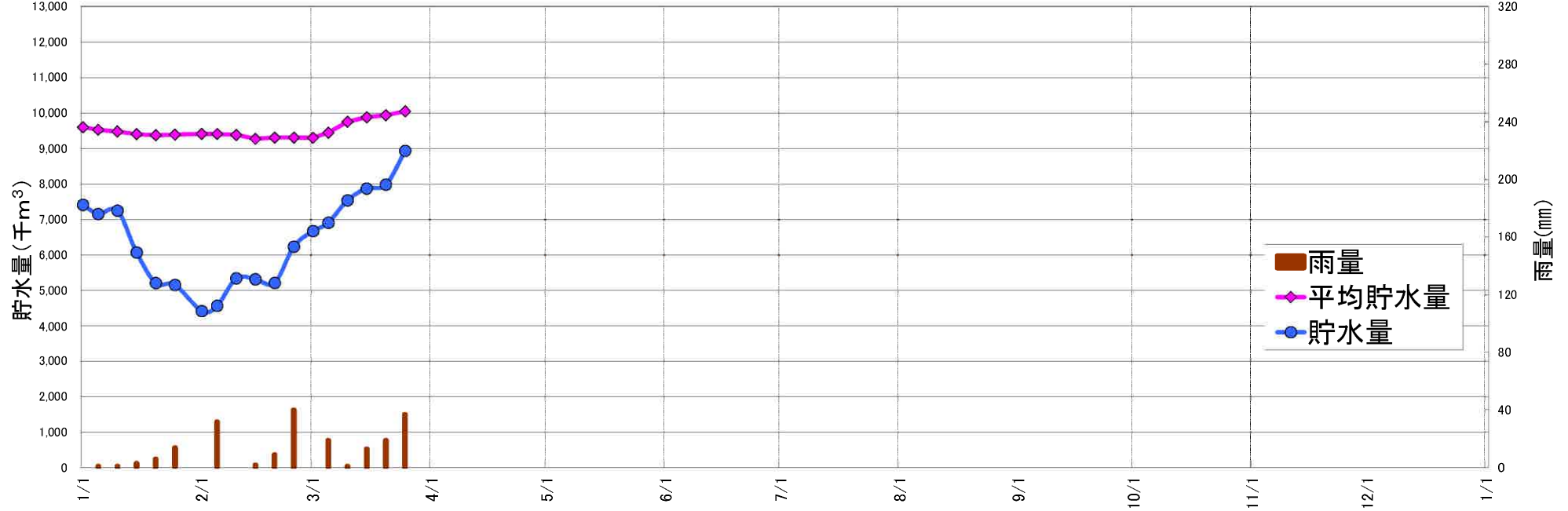


三川ダム貯水状況(令和6年)

速報値

1月雨量 29 mm 平年比 75%	2月雨量 93 mm 平年比 202%	3月雨量 131 mm 平年比 159%	4月雨量 0 mm 平年比 0%	5月雨量 0 mm 平年比 0%	6月雨量 0 mm 平年比 0%	7月雨量 0 mm 平年比 0%	8月雨量 0 mm 平年比 0%	9月雨量 0 mm 平年比 0%	10月雨量 0 mm 平年比 0%	11月雨量 0 mm 平年比 0%	12月雨量 0 mm 平年比 0%
--------------------------	---------------------------	----------------------------	------------------------	------------------------	------------------------	------------------------	------------------------	------------------------	-------------------------	-------------------------	-------------------------



月日	貯水量	貯水率	平均貯水量	雨量
R6/1/1	7,412	60.2%	9,596	
5	7,150	58.1%	9,527	1
10	7,244	58.9%	9,477	1
15	6,066	49.3%	9,400	3
20	5,202	42.3%	9,372	6
25	5,149	41.8%	9,393	14
2/1	4,413	35.9%	9,410	32
5	4,561	37.1%	9,404	32
10	5,336	43.4%	9,380	
15	5,308	43.1%	9,270	2
20	5,206	42.3%	9,306	9
25	6,231	50.6%	9,305	40
3/1	6,667	54.2%	9,300	
5	6,904	56.1%	9,443	19
10	7,536	61.2%	9,753	1
15	7,869	63.9%	9,879	13
20	7,977	64.8%	9,935	19
25	8,934	72.6%	10,046	37
4/1				
5				
10				
15				
20				
25				
5/1				
5				
10				
15				
20				
25				
6/1				
5				
10				
15				
20				
25				
7/1				
5				
10				
15				
20				
25				
8/1				
5				
10				
15				
20				
25				
9/1				
5				
10				
15				
20				
25				
10/1				
5				
10				
15				
20				
25				
11/1				
5				
10				
15				
20				
25				
12/1				
5				
10				
15				
20				
25				
R7.1.1				

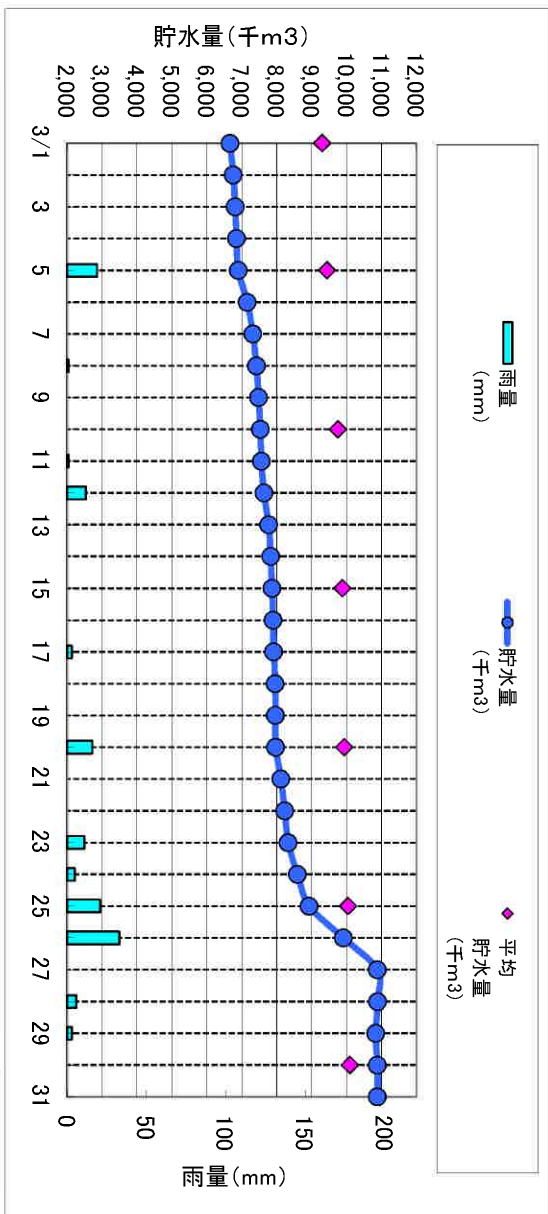
貯水量：当日9:00現在(千m3)
 雨量：半旬毎の雨量合計(mm)
 平均貯水量：当日9:00における過去10年(H25～R4)の平均値(千m³)
 平年：1993(H5)～2022(R4)の30年間の平均値

三川ダム状況(令和6年3月)

月日	貯水量 (千m ³)	貯水率 (%)	平均 貯水量 (千m ³)	雨量 (mm)
3/1	6,667	54.2	9,300	0
2	6,761	54.9		0
3	6,815	55.4		0
4	6,855	55.7		0
5	6,904	56.1	9,443	19
6	7,160	58.2		0
7	7,320	59.5		0
8	7,423	60.3		1
9	7,487	60.8		0
10	7,536	61.2	9,753	0
11	7,568	61.5		1
12	7,638	62.1		12
13	7,772	63.2		0
14	7,832	63.6		0
15	7,869	63.9	9,879	0
16	7,896	64.2		0
17	7,918	64.3		3
18	7,961	64.7		0
19	7,966	64.7		0
20	7,977	64.8	9,935	16
21	8,122	66.0		0
22	8,235	66.9		0
23	8,332	67.7		11
24	8,599	69.9		5
25	8,934	72.6	10,046	21
26	9,910	80.5		33
27	10,884	88.4		0
28	10,891	88.5		6
29	10,834	88.0		3
30	10,884	88.4	10,094	0
31	10,884	88.4		0

雨量(mm)	131
平年(mm)	82
平年比(%)	160

貯水量は午前9時の値



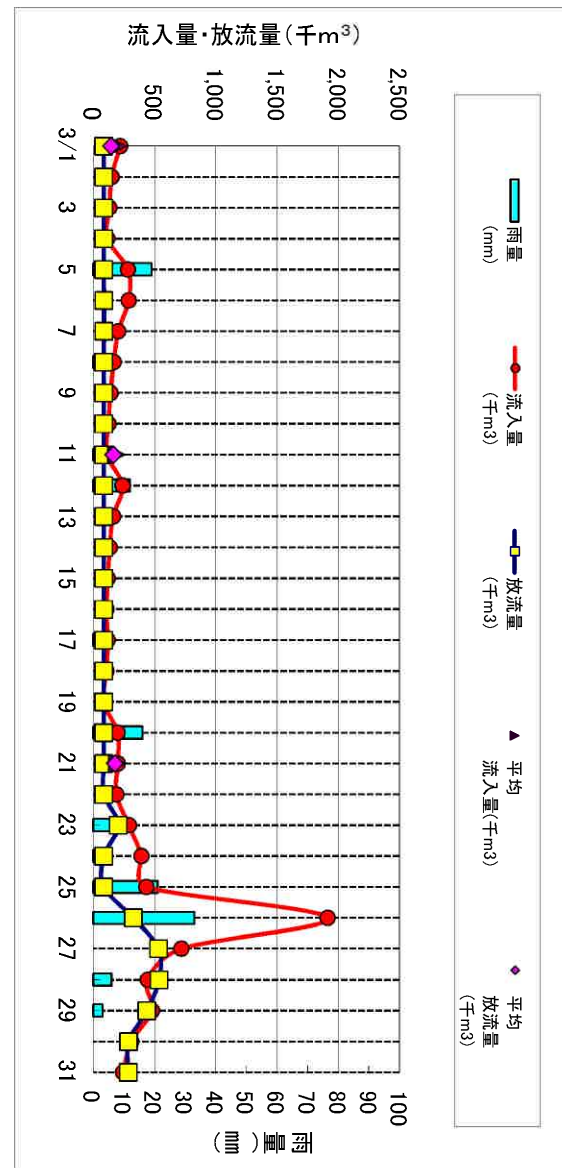
月日	雨量 (mm)	流入量 (千m ³)	平均 流入量 (千m ³)	放流量 (千m ³)	平均 放流量 (千m ³)	補給量 (千m ³)
3/1	0	219		86		-133
2	0	150		85		-65
3	0	130		86		-44
4	0	115		86		-29
5	19	283	198	86	145	-197
6	0	289		87		-202
7	0	203		87		-116
8	1	167		86		-81
9	0	140		86		-54
10	0	123		86		-37
11	1	113		86		-27
12	12	237		86		-151
13	0	161		86		-75
14	0	134		86		-48
15	0	118	187	86	164	-32
16	0	107		86		-21
17	3	118		86		-32
18	0	107		85		-22
19	0	85		85		0
20	16	198		85		-113
21	0	199		86		-113
22	0	188		86		-102
23	11	291		204		-87
24	5	392		86		-306
25	21	433	195	86	176	-347
26	33	1,913		327		-1,586
27	0	718		534		-184
28	6	443		536		93
29	3	479		438		-41
30	0	310		288		-22
31	0	243		287		44

流入量: 日量(千m³/日)

放流量: 日量(千m³/日)

平均流入量: 過去10年(H25~R4)の旬別平均流入量

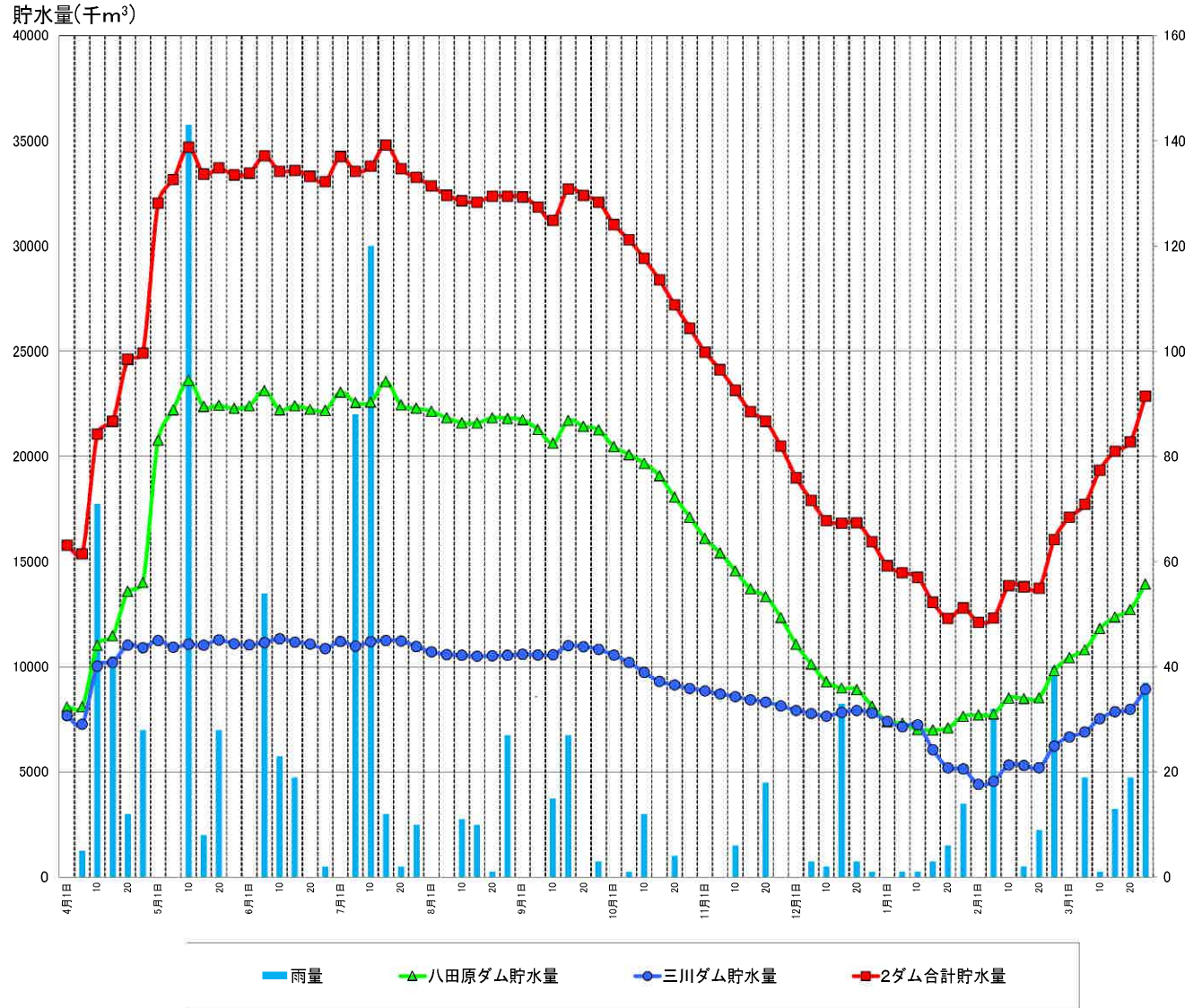
平均放流量: 過去10年(H25~R4)の旬別平均放流量



八田原ダム、三川ダムの貯水状況(令和5年度)

項目 月日	八田原ダム			三川ダム		2ダム合計		雨量 三川 (mm)	備考
	貯水位 EL. (m)	貯水量 (千m ³)	貯水 率	貯水量 (千m ³)	貯水率	貯水量 (千m ³)	貯水率		
4月1日	220.77	8,096	35.2%	7,686	62.5%	15,782	44.7%	0	
5	220.77	8,096	35.2%	7,274	59.1%	15,370	43.5%	5	
10	224.35	11,030	48.0%	10,034	81.5%	21,064	59.7%	71	
15	224.82	11,467	49.9%	10,203	82.9%	21,670	61.4%	42	
20	227.00	13,582	59.1%	11,030	89.6%	24,612	69.7%	12	
25	227.42	14,010	60.9%	10,913	88.7%	24,923	70.6%	28	
5月1日	233.30	20,782	90.4%	11,249	91.4%	32,031	90.7%	0	
5	234.42	22,223	96.6%	10,935	88.9%	33,158	93.9%	0	
10	235.45	23,618	102.7%	11,074	90.0%	34,692	98.3%	143	
15	234.54	22,384	97.3%	11,030	89.6%	33,414	94.6%	8	
20	234.57	22,424	97.5%	11,278	91.6%	33,702	95.5%	28	
25	234.46	22,277	96.9%	11,096	90.2%	33,373	94.5%	0	
6月1日	234.56	22,411	97.4%	11,044	89.7%	33,455	94.8%	0	
5	235.09	23,124	100.5%	11,154	90.6%	34,278	97.1%	54	
10	234.42	22,223	96.6%	11,329	92.1%	33,552	95.0%	23	
15	234.56	22,411	97.4%	11,176	90.8%	33,587	95.1%	19	
20	234.43	22,237	96.7%	11,081	90.0%	33,318	94.4%	0	
25	234.39	22,183	96.4%	10,869	88.3%	33,052	93.6%	2	
7月1日	235.04	23,055	100.2%	11,205	91.1%	34,260	97.0%	0	
5	234.67	22,558	98.1%	10,986	89.3%	33,544	95.0%	88	
10	234.69	22,585	98.2%	11,198	91.0%	33,783	95.7%	120	
15	235.40	23,550	102.4%	11,249	91.4%	34,799	98.6%	12	
20	234.58	22,438	97.6%	11,227	91.2%	33,665	95.4%	2	
25	234.47	22,290	96.9%	10,964	89.1%	33,254	94.2%	10	
8月1日	234.36	22,143	96.3%	10,711	87.0%	32,854	93.1%	0	
5	234.13	21,835	94.9%	10,580	86.0%	32,415	91.8%	0	
10	233.95	21,598	93.9%	10,548	85.7%	32,146	91.0%	11	
15	233.94	21,586	93.9%	10,502	85.3%	32,088	90.9%	10	
20	234.13	21,835	94.9%	10,528	85.6%	32,363	91.7%	1	
25	234.11	21,808	94.8%	10,548	85.7%	32,356	91.6%	27	
9月1日	234.06	21,741	94.5%	10,593	86.1%	32,334	91.6%	0	
5	233.70	21,284	92.5%	10,567	85.9%	31,851	90.2%	0	
10	233.18	20,631	89.7%	10,574	85.9%	31,205	88.4%	15	
15	234.03	21,701	94.4%	11,008	89.5%	32,709	92.6%	27	
20	233.82	21,435	93.2%	10,957	89.0%	32,392	91.7%	0	
25	233.68	21,259	92.4%	10,828	88.0%	32,087	90.9%	3	
10月1日	233.05	20,468	89.0%	10,554	85.8%	31,022	87.9%	0	
5	232.75	20,091	87.4%	10,203	82.9%	30,294	85.8%	1	
10	232.42	19,677	85.6%	9,734	79.1%	29,411	83.3%	12	
15	231.94	19,079	83.0%	9,304	75.6%	28,383	80.4%	0	
20	231.08	18,068	78.6%	9,140	74.3%	27,208	77.1%	4	
25	230.27	17,116	74.4%	8,975	72.9%	26,091	73.9%	0	
11月1日	229.37	16,106	70.0%	8,852	71.9%	24,958	70.7%	0	
5	228.74	15,414	67.0%	8,705	70.7%	24,119	68.3%	0	
10	227.96	14,560	63.3%	8,581	69.7%	23,141	65.5%	6	
15	227.12	13,704	59.6%	8,434	68.5%	22,138	62.7%	0	
20	226.76	13,338	58.0%	8,327	67.7%	21,665	61.4%	18	
25	225.76	12,341	53.7%	8,144	66.2%	20,485	58.0%	0	
12月1日	224.39	11,067	48.1%	7,928	64.4%	18,995	53.8%	0	
5	223.32	10,133	44.1%	7,778	63.2%	17,911	50.7%	3	
10	222.31	9,286	40.4%	7,654	62.2%	16,940	48.0%	2	
15	221.96	8,996	39.1%	7,832	63.6%	16,828	47.7%	33	
20	221.85	8,913	38.8%	7,928	64.4%	16,841	47.7%	3	
25	220.82	8,134	35.4%	7,805	63.4%	15,939	45.1%	1	
1月1日	219.82	7,391	32.1%	7,412	60.2%	14,803	41.9%	0	
5	219.71	7,316	31.8%	7,150	58.1%	14,466	41.0%	1	
10	219.27	7,015	30.5%	7,244	58.9%	14,259	40.4%	1	
15	219.25	7,002	30.4%	6,066	49.3%	13,068	37.0%	3	
20	219.39	7,097	30.9%	5,202	42.3%	12,299	34.8%	6	
25	220.18	7,650	33.3%	5,149	41.8%	12,799	36.3%	14	
2月1日	220.25	7,703	33.5%	4,413	35.9%	12,116	34.3%	0	
5	220.32	7,756	33.7%	4,561	37.1%	12,317	34.9%	32	
10	221.33	8,519	37.0%	5,336	43.4%	13,855	39.2%	0	
15	221.30	8,497	36.9%	5,308	43.1%	13,805	39.1%	2	
20	221.34	8,527	37.1%	5,206	42.3%	13,733	38.9%	9	
25	222.95	9,823	42.7%	6,231	50.6%	16,054	45.5%	40	
3月1日	223.68	10,436	45.4%	6,667	54.2%	17,103	48.4%	0	
5	224.12	10,816	47.0%	6,904	56.1%	17,720	50.2%	19	
10	225.20	11,820	51.4%	7,536	61.2%	19,356	54.8%	1	
15	225.79	12,369	53.8%	7,869	63.9%	20,238	57.3%	13	
20	226.15	12,717	55.3%	7,977	64.8%	20,694	58.6%	19	
25	227.34	13,928	60.6%	8,934	72.6%	22,862	64.8%	37	
4月1日									

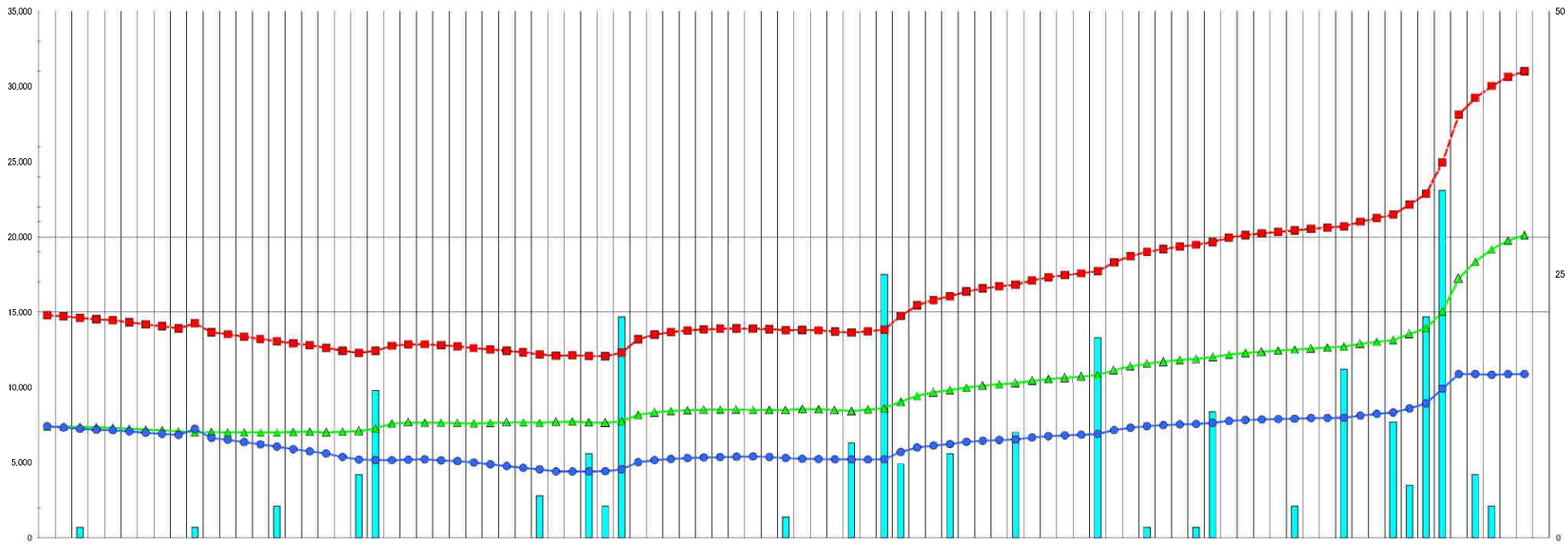
八田原ダム、三川ダムの貯水状況グラフ(令和5年度)



※三川雨量は半旬計, その他の数値は当日午前9時の値を使用
 ※貯水率は八田原ダム23000千t, 三川ダム12306千tを満水として計算

八田原ダム・三川ダムの貯水状況 (R6年1月 ~ R6年3月)

速報値



月日	八田原ダム		三川ダム		2ダム合計		三川雨量 (mm)	備考
	貯水位 EL (m)	貯水量 (千m ³)	貯水率 (%)	貯水量 (千m ³)	貯水率 (%)	貯水量 (千m ³)		
1/1	219.82	7,391	32.1%	7,412	60.2%	14,803	41.9%	
1/2	219.83	7,398	32.2%	7,331	59.6%	14,729	41.7%	
1/3	219.78	7,364	32.0%	7,249	58.9%	14,613	41.4%	1
1/4	219.76	7,350	32.0%	7,180	58.3%	14,530	41.2%	
1/5	219.71	7,316	31.8%	7,150	58.1%	14,466	41.0%	
1/6	219.61	7,248	31.5%	7,072	57.5%	14,320	40.6%	
1/7	219.53	7,193	31.3%	6,993	56.8%	14,186	40.2%	
1/8	219.47	7,152	31.1%	6,914	56.2%	14,066	39.8%	
1/9	219.36	7,077	30.8%	6,835	55.5%	13,912	39.4%	
1/10	219.27	7,015	30.5%	7,244	58.9%	14,259	40.4%	1
1/11	219.29	7,029	30.6%	6,838	53.9%	13,867	38.7%	
1/12	219.27	7,015	30.5%	6,519	53.0%	13,534	38.3%	
1/13	219.26	7,009	30.5%	6,362	51.7%	13,371	37.9%	
1/14	219.25	7,002	30.4%	6,214	50.5%	13,216	37.4%	
1/15	219.25	7,002	30.4%	6,066	49.3%	13,068	37.0%	3
1/16	219.30	7,036	30.6%	5,892	47.9%	12,928	36.6%	
1/17	219.33	7,056	30.7%	5,749	46.7%	12,805	36.3%	
1/18	219.26	7,009	30.5%	5,611	45.6%	12,620	35.7%	
1/19	219.33	7,056	30.7%	5,377	43.7%	12,433	35.2%	
1/20	219.39	7,097	30.9%	5,202	42.3%	12,299	34.8%	6
1/21	219.63	7,261	31.6%	5,169	42.0%	12,430	35.2%	14
1/22	220.11	7,597	33.0%	5,165	42.0%	12,762	36.1%	
1/23	220.20	7,665	33.3%	5,194	42.2%	12,859	36.4%	
1/24	220.18	7,650	33.3%	5,218	42.4%	12,868	36.4%	
1/25	220.18	7,650	33.3%	5,149	41.8%	12,799	36.3%	
1/26	220.15	7,627	33.2%	5,100	41.4%	12,727	36.0%	
1/27	220.12	7,605	33.1%	5,006	40.7%	12,611	35.7%	
1/28	220.16	7,635	33.2%	4,888	39.7%	12,523	35.5%	
1/29	220.20	7,665	33.3%	4,770	38.8%	12,435	35.2%	
1/30	220.22	7,680	33.4%	4,651	37.8%	12,331	34.9%	
2/1	220.17	7,643	33.2%	4,554	37.0%	12,197	34.5%	4
2/2	220.25	7,703	33.5%	4,413	35.9%	12,116	34.3%	
2/3	220.21	7,673	33.4%	4,409	35.8%	12,082	34.2%	8
2/4	220.16	7,635	33.2%	4,431	36.0%	12,066	34.2%	3
2/5	220.32	7,756	33.7%	4,561	37.1%	12,317	34.9%	21
2/6	220.87	8,172	35.5%	5,023	40.8%	13,195	37.4%	
2/7	221.09	8,338	36.3%	5,165	42.0%	13,503	38.2%	
2/8	221.21	8,429	36.6%	5,247	42.6%	13,676	38.7%	
2/9	221.28	8,482	36.9%	5,300	43.1%	13,782	39.0%	
2/10	221.33	8,519	37.0%	5,336	43.4%	13,855	39.2%	
2/11	221.35	8,535	37.1%	5,389	43.6%	13,900	39.4%	
2/12	221.35	8,535	37.1%	5,389	43.6%	13,924	39.4%	
2/13	221.30	8,497	36.9%	5,410	44.0%	13,907	39.4%	
2/14	221.30	8,497	36.9%	5,373	43.7%	13,870	39.3%	
2/15	221.30	8,497	36.9%	5,308	43.1%	13,805	39.1%	2
2/16	221.38	8,557	37.2%	5,255	42.7%	13,812	39.1%	
2/17	221.37	8,550	37.2%	5,239	42.6%	13,789	39.1%	
2/18	221.30	8,429	36.6%	5,222	42.4%	13,719	38.9%	
2/19	221.21	8,429	36.6%	5,210	42.3%	13,639	38.6%	9
2/20	221.34	8,527	37.1%	5,206	42.3%	13,733	38.9%	
2/21	221.45	8,610	37.4%	5,214	42.4%	13,824	39.2%	25
2/22	222.02	9,043	39.3%	5,709	46.4%	14,752	41.8%	7
2/23	222.50	9,446	41.1%	6,004	48.8%	15,450	43.8%	
2/24	222.76	9,684	42.0%	6,138	49.9%	15,802	44.8%	
2/25	223.25	9,823	42.7%	6,231	50.6%	16,054	45.5%	8
2/26	223.15	9,991	43.4%	6,376	51.8%	16,367	46.4%	
2/27	223.20	10,117	44.0%	6,455	52.5%	16,572	46.9%	
2/28	223.41	10,209	44.4%	6,505	52.9%	16,714	47.3%	
2/29	223.80	10,285	44.7%	6,534	53.1%	16,819	47.6%	10
3/1	223.88	10,436	45.4%	6,667	54.2%	17,103	48.4%	
3/2	223.82	10,553	45.9%	6,761	54.9%	17,314	49.0%	
3/3	223.93	10,645	46.3%	6,815	55.4%	17,460	49.5%	
3/4	224.02	10,723	46.6%	6,855	55.7%	17,578	49.8%	
3/5	224.12	10,816	47.0%	6,904	56.1%	17,720	50.2%	19
3/6	224.48	11,150	48.5%	7,160	58.2%	18,310	51.9%	
3/7	224.75	11,402	49.6%	7,320	59.5%	18,722	53.0%	
3/8	224.94	11,578	50.3%	7,423	60.3%	19,001	53.8%	1
3/9	225.08	11,708	50.9%	7,487	60.8%	19,195	54.4%	
3/10	225.20	11,820	51.4%	7,536	61.2%	19,356	54.8%	
3/11	225.29	11,904	51.8%	7,568	61.5%	19,472	55.2%	1
3/12	225.41	12,015	52.2%	7,638	62.1%	19,653	55.7%	12
3/13	225.58	12,173	52.9%	7,732	63.2%	19,945	56.5%	
3/14	225.70	12,285	53.4%	7,832	63.6%	20,117	57.0%	
3/15	225.79	12,369	53.8%	7,869	63.9%	20,238	57.3%	
3/16	225.87	12,443	54.1%	7,896	64.2%	20,339	57.6%	
3/17	225.94	12,508	54.4%	7,918	64.3%	20,426	57.9%	3
3/18	226.02	12,584	54.7%	7,961	64.7%	20,545	58.2%	
3/19	226.08	12,645	55.0%	7,966	64.7%	20,611	58.4%	
3/20	226.15	12,717	55.3%	7,977	64.8%	20,694	58.6%	16
3/21	226.32	12,890	56.0%	8,122	66.0%	21,012	59.5%	
3/22	226.45	13,022	56.6%	8,235	66.9%	21,257	60.2%	
3/23	226.57	13,144	57.1%	8,332	67.7%	21,476	60.8%	11
3/24	226.97	13,551	58.9%	8,599	69.9%	22,150	62.7%	5
3/25	227.34	13,928	60.6%	8,934	72.6%	22,862	64.8%	21
3/26	228.40	15,040	65.4%	9,910	80.5%	24,950	70.7%	33
3/27	230.37	17,233	74.9%	10,884	88.4%	28,117	79.6%	
3/28	231.32	18,350	79.8%	10,991	88.5%	29,241	82.8%	6
3/29	232.02	19,175	83.4%	10,834	88.0%	30,009	85.0%	3
3/30	232.48	19,752	85.9%	10,884	88.4%	30,636	86.8%	
3/31	232.77	20,116	87.5%	10,884	88.4%	31,000	87.8%	
4/1								

50
25
0

速報値

令和6年

期 間	H31 三川	R 2 三川	R 3 三川	R 4 三川	R 5 三川	過去5年 平均	令和6年				期 間
							R 6 三川	R 6 賀茂	R 6 甲山	R 6 七社	
01 01-10	0	15	0	0	1	3.2	2	2	3	1	01-10
01 11-20	3	1	2	4	16	5.2	9	11	8	4	01 11-20
01 21-31	15	52	36	6	5	22.8	18	19	18	14	01 21-31
02 01-10	8	1	12	2	5	5.6	32	33	32	29	02 01-10
02 11-20	12	26	21	2	25	17.2	11	14	12	13	02 11-20
02 21-29	13	18	10	2	0	8.6	50	49	53	44	02 21-29
03 01-10	49	59	27	16	5	31.2	20	16	22	14	03 01-10
03 11-20	23	6	10	42	34	23.0	32	24	33	28	03 11-20
03 21-31	4	31	28	31	17	22.2	79	75	74	71	03 21-31
04 01-10	30	41	15	0	76	32.4					04 01-10
04 11-20	4	124	24	80	54	57.2					04 11-20
04 21-30	45	1	61	82	93	56.4					04 21-30
05 01-10	4	35	20	0	143	40.4					05 01-10
05 11-20	26	73	104	34	36	54.6					05 11-20
05 21-31	7	7	36	3	56	21.8					05 21-31
06 01-10	42	6	44	51	77	44.0					06 01-10
06 11-20	30	171	70	20	19	62.0					06 11-20
06 21-30	22	30	28	20	81	36.2					06 21-30
07 01-10	47	184	133	24	208	119.2					07 01-10
07 11-20	151	131	77	145	14	103.6					07 11-20
07 21-31	63	68	0	5	10	29.2					07 21-31
08 01-10	7	0	60	5	11	16.6					08 01-10
08 11-20	65	12	450	135	11	134.6					08 11-20
08 21-31	117	2	5	26	31	36.2					08 21-31
09 01-10	23	24	165	22	15	49.8					09 01-10
09 11-20	6	53	55	133	27	54.8					09 11-20
09 21-30	26	67	1	34	3	26.2					09 21-30
10 01-10	31	12	0	19	13	15.0					10 01-10
10 11-20	39	12	3	0	4	11.6					10 11-20
10 21-31	65	54	15	0	9	28.6					10 21-31
11 01-10	0	23	42	2	6	14.6					11 01-10
11 11-20	11	0	0	5	18	6.8					11 11-20
11 21-30	0	6	47	30	3	17.2					11 21-30
12 01-10	13	0	0	0	5	3.6					12 01-10
12 11-20	10	0	14	1	36	12.2					12 11-20
12 21-31	15	29	1	13	4	12.4					12 21-31
合 計	1,026	1,374	1,616	994	1,171	1,236					合 計

