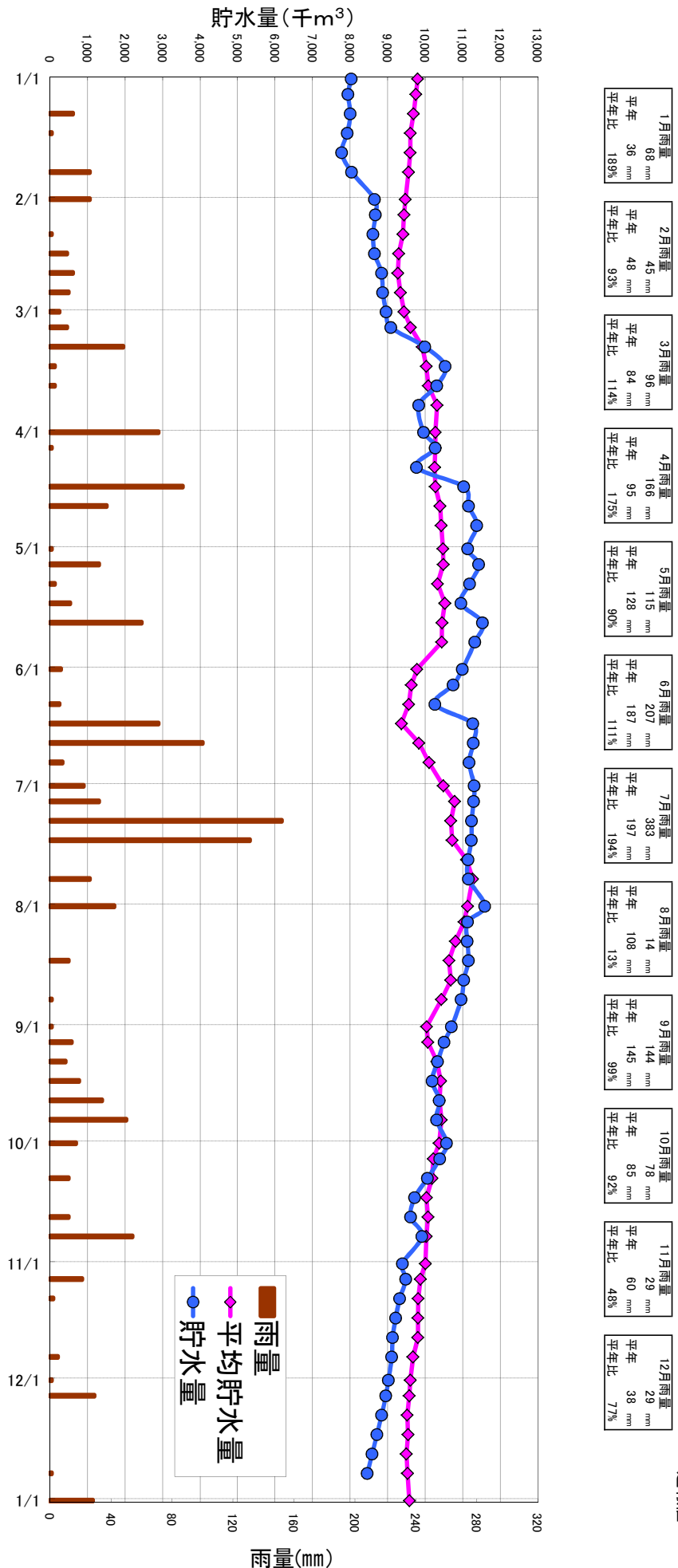


三川ダム貯水状況(令和2年)

速報値



月日	貯水量	貯水率	平均貯水量	雨量
R2/1/1	8,031	65.3%	9,802	
5	7,945	64.6%	9,753	
10	8,004	65.0%	9,690	15
15	7,923	64.4%	9,606	1
20	7,778	63.2%	9,602	
25	8,041	65.3%	9,558	26
2/1	8,652	70.3%	9,472	26
5	8,675	70.5%	9,437	
10	8,611	70.0%	9,409	1
15	8,652	70.3%	9,297	11
20	8,840	71.8%	9,273	15
25	8,869	72.1%	9,340	12
3/1	8,963	72.8%	9,440	6
5	9,087	73.8%	9,609	11
10	9,994	81.2%	9,924	48
15	10,535	85.6%	10,029	3
20	10,313	83.8%	10,088	3
25	9,832	79.9%	10,319	
4/1	9,962	81.0%	10,274	71
5	10,274	83.5%	10,275	1
10	9,773	79.4%	10,252	
15	11,030	89.6%	10,271	87
20	11,161	90.7%	10,399	37
25	11,380	92.5%	10,428	
5/1	11,139	90.5%	10,477	1
5	11,431	92.9%	10,483	32
10	11,190	90.9%	10,334	3
15	10,957	89.0%	10,525	13
20	11,533	93.7%	10,451	60
25	11,329	92.1%	10,443	
6/1	10,993	89.3%	9,782	7
5	10,750	87.4%	9,635	
10	10,261	83.4%	9,562	6
15	11,271	91.6%	9,369	71
20	11,285	91.7%	9,834	100
25	11,176	90.8%	10,105	8
7/1	11,307	91.9%	10,486	22
5	11,293	91.8%	10,787	32
10	11,241	91.3%	10,686	152
15	11,234	91.3%	10,722	131
20	11,147	90.6%	11,104	
25	11,154	90.6%	11,267	26
8/1	11,592	94.2%	11,132	42
5	11,132	90.5%	11,039	
10	11,125	90.4%	10,808	
15	11,154	90.6%	10,636	12
20	11,030	89.6%	10,685	
25	10,964	89.1%	10,432	1
9/1	10,704	87.0%	10,041	1
5	10,509	85.4%	10,073	14
10	10,333	84.0%	10,316	10
15	10,190	82.8%	10,416	19
20	10,379	84.3%	10,381	34
25	10,307	83.8%	10,435	50
10/1	10,574	85.9%	10,376	17
5	10,392	84.4%	10,220	
10	10,066	81.8%	10,185	12
15	9,721	79.0%	10,035	
20	9,617	78.1%	10,076	12
25	9,916	80.6%	10,031	54
11/1	9,398	76.4%	10,006	
5	9,486	77.1%	9,874	21
10	9,322	75.8%	9,815	2
15	9,216	74.9%	9,808	
20	9,134	74.2%	9,806	
25	9,110	74.0%	9,677	5
12/1	9,022	73.3%	9,607	1
5	8,952	72.7%	9,580	29
10	8,840	71.8%	9,523	
15	8,716	70.8%	9,544	
20	8,587	69.8%	9,501	
25	8,458	68.7%	9,532	1
R3.1.1	8,611	70.0%	9,580	28

貯水量 : 当日9:00現在(千m³)

雨量 : 半旬毎の雨量合計(mm)

平均貯水量 : 当日9:00における過去10年(H22~H31[R1])の平均値(千m³)

平年 : 1981(S56)~2010(H22)の30年間の平均値

雨量(mm)