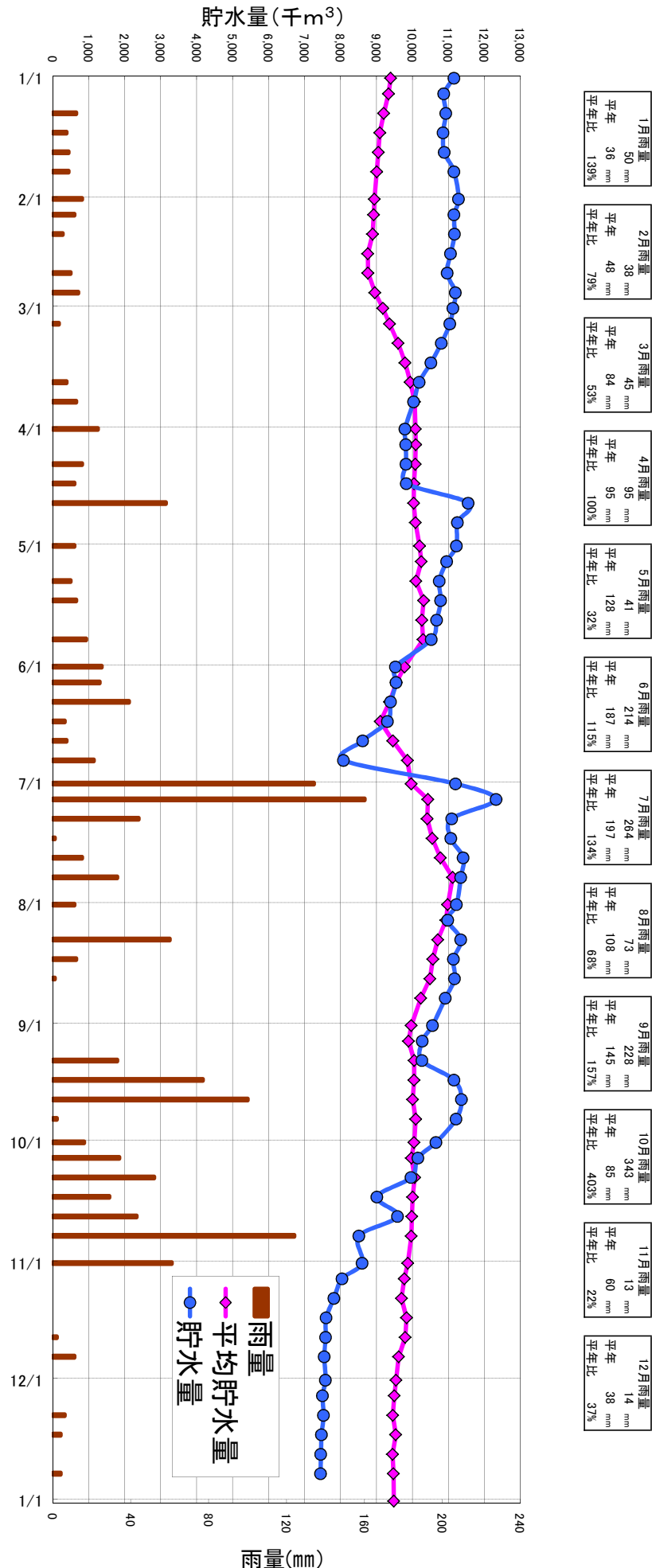


三川ダム貯水状況(平成29年)

速報値



月日	貯水量	貯水率	平均貯水量	雨量
H29/1/1	11,161	90.7%	9,398	
5	10,877	88.4%	9,339	
10	10,935	88.9%	9,206	12
15	10,855	88.2%	9,098	7
20	10,891	88.5%	9,054	8
25	11,161	90.7%	9,010	8
2/1	11,285	91.7%	8,943	15
5	11,161	90.7%	8,927	11
10	11,176	90.8%	8,894	5
15	11,066	89.9%	8,761	
20	10,971	89.2%	8,768	9
25	11,198	91.0%	8,958	13
3/1	11,132	90.5%	9,179	
5	11,044	89.7%	9,366	3
10	10,808	87.8%	9,605	
15	10,522	85.5%	9,797	
20	10,190	82.8%	9,943	7
25	10,040	81.6%	10,063	12
4/1	9,799	79.6%	10,087	23
5	9,819	79.8%	10,094	
10	9,825	79.8%	10,080	15
15	9,838	79.9%	10,046	11
20	11,555	93.9%	10,037	58
25	11,256	91.5%	10,084	
5/1	11,227	91.2%	10,200	11
5	10,957	89.0%	10,250	
10	10,750	87.4%	10,103	9
15	10,789	87.7%	10,317	12
20	10,678	86.8%	10,263	
25	10,528	85.6%	10,296	17
6/1	9,533	77.5%	9,782	25
5	9,552	77.6%	9,556	24
10	9,398	76.4%	9,367	39
15	9,310	75.7%	9,112	6
20	8,622	70.1%	9,459	7
25	8,085	65.7%	9,863	21
7/1	11,205	91.1%	9,969	134
5	12,332	100.2%	10,434	160
10	11,096	90.2%	10,415	44
15	11,074	90.0%	10,553	1
20	11,417	92.8%	10,782	15
25	11,351	92.2%	11,125	33
8/1	11,227	91.2%	10,984	11
5	10,986	89.3%	10,937	
10	11,351	92.2%	10,709	60
15	11,147	90.6%	10,571	12
20	11,176	90.8%	10,493	1
25	10,920	88.7%	10,236	
9/1	10,561	85.8%	9,972	
5	10,281	83.5%	9,895	
10	10,268	83.4%	10,055	33
15	11,161	90.7%	10,048	77
20	11,366	92.4%	10,008	100
25	11,220	91.2%	10,096	2
10/1	10,659	86.6%	10,050	16
5	10,157	82.5%	9,975	34
10	9,968	81.0%	10,065	52
15	9,016	73.3%	10,008	29
20	9,591	77.9%	9,985	43
25	8,517	69.2%	9,972	124
11/1	8,605	69.9%	9,876	61
5	8,047	65.4%	9,775	
10	7,821	63.6%	9,700	
15	7,606	61.8%	9,842	
20	7,589	61.7%	9,804	2
25	7,552	61.4%	9,618	11
12/1	7,584	61.6%	9,547	
5	7,503	61.0%	9,500	
10	7,530	61.2%	9,457	6
15	7,476	60.8%	9,539	4
20	7,455	60.6%	9,449	
25	7,450	60.5%	9,474	4
H30.1.1	7,450	60.5%	9,483	

貯水量：当日9:00現在(千m³)

雨量：半旬毎の雨量合計(mm)

平均貯水量：当日9:00における過去10年(H19~H28)の平均値(千m³)

平年：1981(S56)~2010(H22)の30年間の平均値