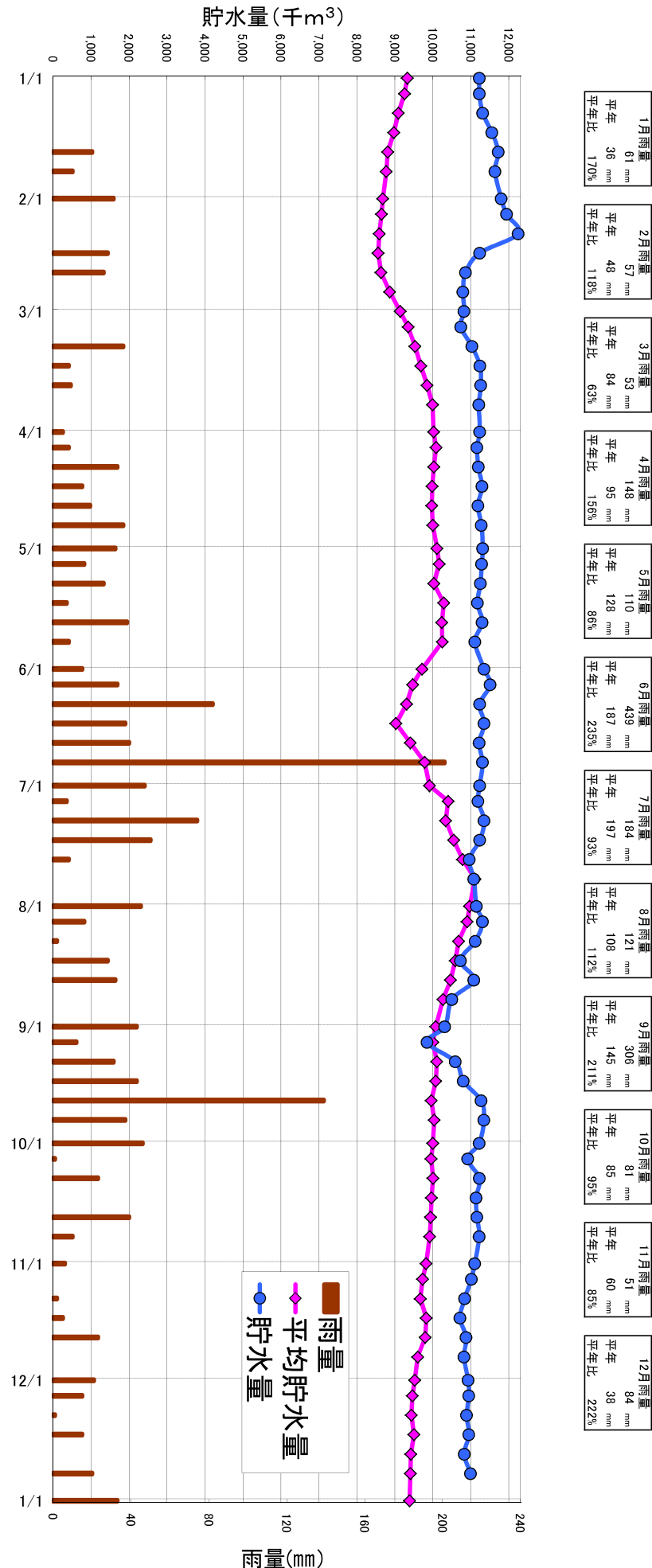


# 三川ダム貯水状況(平成28年)

速報値



月日	貯水量	貯水率	平均貯水量	雨量
H28/1/1	11,227	91.2%	9,328	
5	11,227	91.2%	9,254	
10	11,314	91.9%	9,089	
15	11,555	93.9%	8,971	
20	11,723	95.3%	8,811	20
25	11,636	94.6%	8,774	10
2/1	11,803	95.9%	8,681	31
5	11,942	97.0%	8,648	
10	12,249	99.5%	8,588	
15	11,234	91.3%	8,559	28
20	10,862	88.3%	8,635	26
25	10,795	87.7%	8,865	
3/1	10,821	87.9%	9,142	
5	10,737	87.3%	9,350	
10	11,030	89.6%	9,532	36
15	11,241	91.3%	9,685	8
20	11,263	91.5%	9,851	9
25	11,212	91.1%	9,993	
4/1	11,234	91.3%	10,020	5
5	11,161	90.7%	10,084	8
10	11,198	91.0%	10,026	33
15	11,293	91.8%	9,983	15
20	11,190	90.9%	9,974	19
25	11,278	91.6%	9,999	36
5/1	11,314	91.9%	10,110	32
5	11,285	91.7%	10,167	16
10	11,256	91.5%	10,025	26
15	11,176	90.8%	10,287	7
20	11,300	91.8%	10,237	38
25	11,110	90.3%	10,249	8
6/1	11,351	92.2%	9,715	15
5	11,511	93.5%	9,469	33
10	11,234	91.3%	9,310	82
15	11,351	92.2%	9,029	37
20	11,220	91.2%	9,406	39
25	11,307	91.9%	9,783	201
7/1	11,234	91.3%	9,914	47
5	11,190	90.9%	10,404	7
10	11,351	92.2%	10,338	74
15	11,234	91.3%	10,550	50
20	10,964	89.1%	10,784	8
25	11,081	90.0%	11,112	
8/1	11,147	90.6%	10,969	45
5	11,307	91.9%	10,901	16
10	11,117	90.3%	10,679	2
15	10,730	87.2%	10,591	28
20	11,081	90.0%	10,466	32
25	10,502	85.3%	10,268	
9/1	10,313	83.8%	10,075	43
5	9,851	80.1%	10,000	12
10	10,593	86.1%	10,106	31
15	10,802	87.8%	10,079	43
20	11,271	91.6%	9,960	139
25	11,344	92.2%	10,037	37
10/1	11,220	91.2%	9,998	46
5	10,920	88.7%	9,956	1
10	11,227	91.2%	10,006	23
15	11,139	90.5%	9,965	
20	11,161	90.7%	9,942	39
25	11,220	91.2%	9,915	10
11/1	11,103	90.2%	9,823	6
5	11,015	89.5%	9,729	
10	10,841	88.1%	9,671	2
15	10,717	87.1%	9,828	5
20	10,877	88.4%	9,797	23
25	10,821	87.9%	9,603	
12/1	10,928	88.8%	9,523	21
5	10,950	89.0%	9,459	15
10	10,891	88.5%	9,434	1
15	10,950	89.0%	9,503	15
20	10,828	88.0%	9,419	
25	10,993	89.3%	9,409	20
H29.1.1	11,161	90.7%	9,387	33

貯水量 : 当日9:00現在(千m<sup>3</sup>)

雨量 : 半旬毎の雨量合計(mm)

平均貯水量 : 当日9:00における過去10年(H18~H27)の平均値(千m<sup>3</sup>)

平年 : 1981(S56)~2010(H22)の30年間の平均値