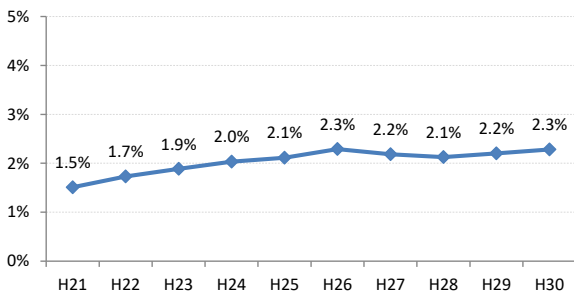


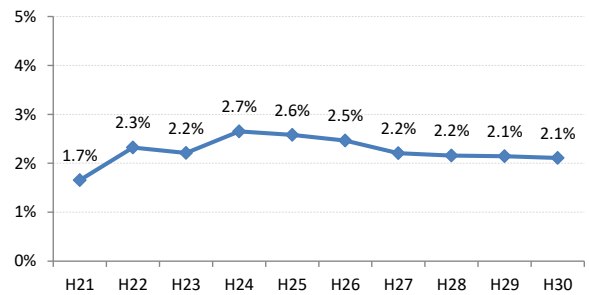
【子宮頸がん】要精検率の推移

子宮	H21	H22	H23	H24	H25	H26	H27	H28	H29	H30
全国	1.5%	1.7%	1.9%	2.0%	2.1%	2.3%	2.2%	2.1%	2.2%	2.3%
広島県	1.7%	2.3%	2.2%	2.7%	2.6%	2.5%	2.2%	2.2%	2.1%	2.1%
広島市	1.9%	2.6%	1.8%	2.7%	2.4%	2.5%	2.2%	2.2%	2.1%	2.1%
呉市	1.4%	2.5%	2.6%	2.5%	2.4%	2.9%	2.5%	1.9%	2.6%	2.5%
竹原市	1.2%	1.0%	1.7%	0.9%	1.5%	1.6%	1.5%	2.6%	2.3%	1.2%
三原市	2.0%	2.0%	1.8%	2.1%	2.2%	1.6%	2.3%	2.9%	2.4%	2.3%
尾道市	1.7%	3.2%	3.1%	3.2%	3.5%	2.4%	2.4%	2.2%	2.8%	2.4%
福山市	1.6%	2.1%	3.1%	4.3%	4.3%	3.2%	2.4%	2.3%	2.2%	2.3%
府中市	1.1%	2.1%	0.9%	1.0%	1.3%	0.6%	0.4%	1.3%	1.5%	1.6%
三次市	0.9%	1.4%	2.1%	1.9%	1.1%	2.0%	0.7%	1.6%	1.6%	1.9%
庄原市	1.1%	1.0%	0.9%	1.2%	1.0%	2.1%	1.8%	3.1%	2.6%	1.1%
大竹市	1.5%	2.8%	3.8%	3.3%	3.2%	2.3%	2.0%	0.9%	1.3%	3.1%
東広島市	1.3%	1.3%	1.6%	2.1%	2.2%	2.3%	2.2%	1.8%	1.4%	1.9%
廿日市市	1.5%	3.2%	3.9%	1.7%	2.1%	1.5%	2.4%	2.8%	1.9%	1.8%
安芸高田市	0.9%	2.6%	1.4%	2.2%	2.9%	1.8%	0.8%	1.4%	0.8%	0.6%
江田島市	0.5%	0.5%	1.0%	1.2%	1.1%	2.4%	0.5%	1.6%	0.8%	1.5%
府中町	3.6%	2.1%	2.8%	1.7%	2.0%	2.8%	4.5%	1.8%	2.3%	3.1%
海田町	1.9%	2.6%	3.6%	2.5%	3.1%	3.2%	2.0%	1.3%	1.9%	1.5%
熊野町	1.6%	2.9%	2.0%	2.0%	0.6%	1.8%	2.3%	2.5%	1.8%	2.0%
坂町	0.0%	0.4%	3.3%	1.0%	2.1%	2.2%	1.6%	2.9%	1.7%	0.0%
安芸太田町	0.8%	0.0%	1.5%	1.5%	0.5%	1.3%	1.7%	0.5%	0.0%	0.0%
北広島町	0.1%	2.6%	2.0%	1.9%	2.0%	1.6%	1.7%	1.5%	1.6%	1.5%
大崎上島町	0.4%	1.0%	1.3%	0.7%	1.4%	3.9%	2.5%	1.6%	1.6%	1.4%
世羅町	1.1%	0.4%	1.3%	1.8%	1.4%	1.8%	0.5%	2.0%	1.8%	1.1%
神石高原町	1.0%	1.4%	0.8%	0.8%	1.1%	2.8%	1.6%	0.7%	2.0%	0.3%

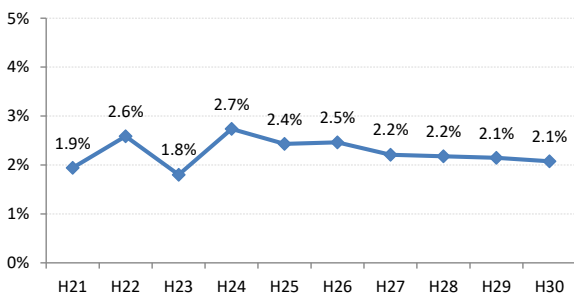
全国



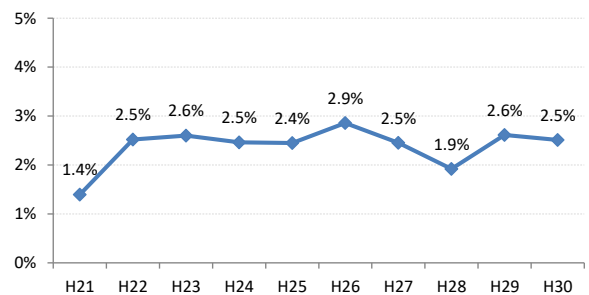
広島県



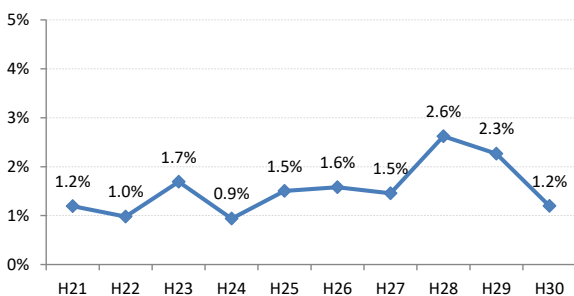
広島市



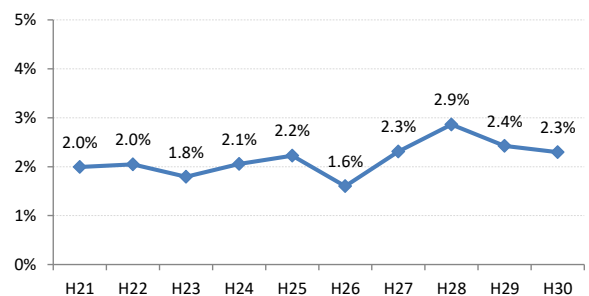
呉市



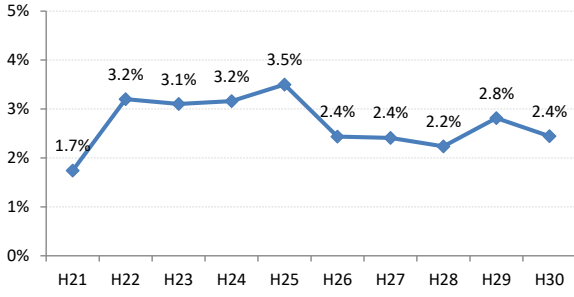
竹原市



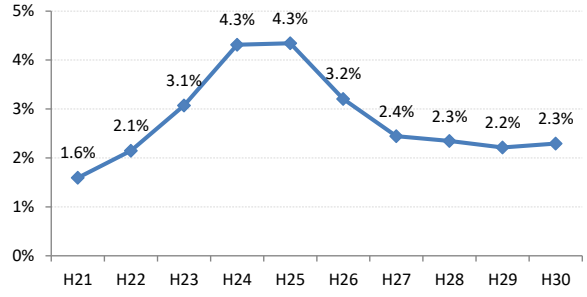
三原市



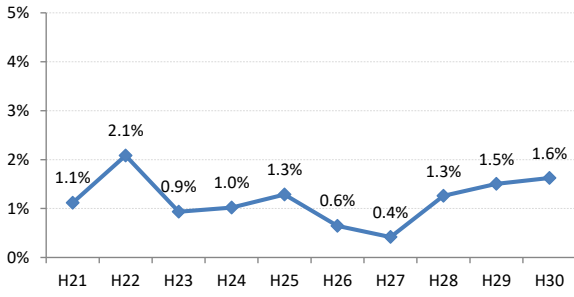
尾道市



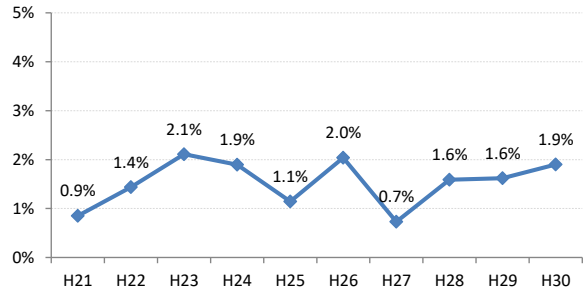
福山市



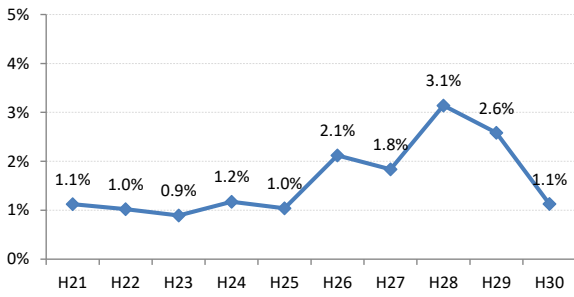
府中市



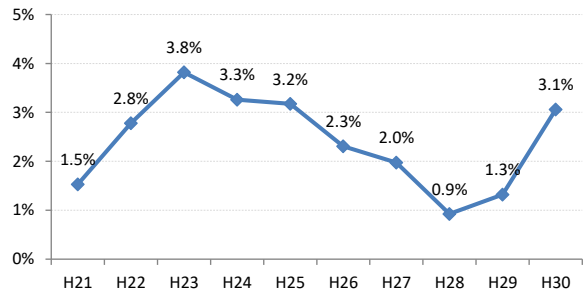
三次市



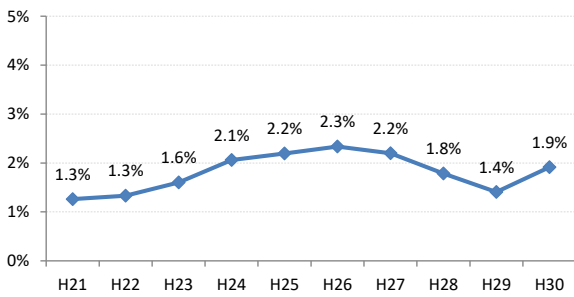
庄原市



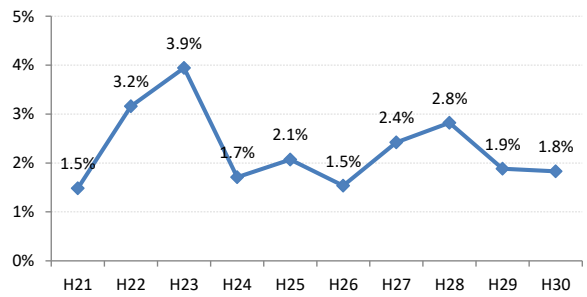
大竹市



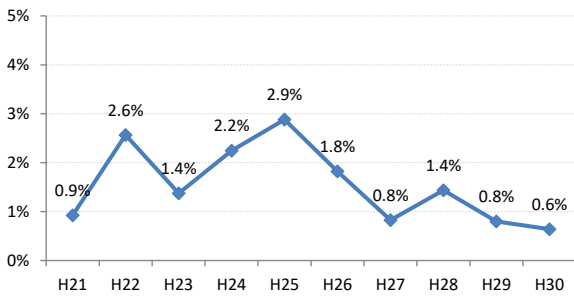
東広島市



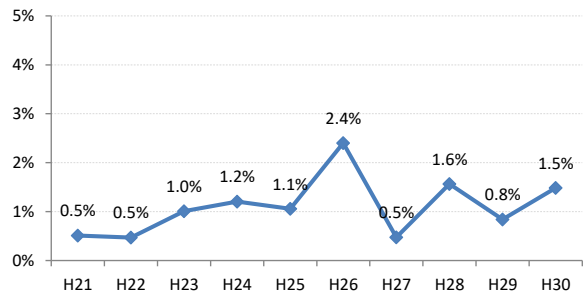
廿日市市



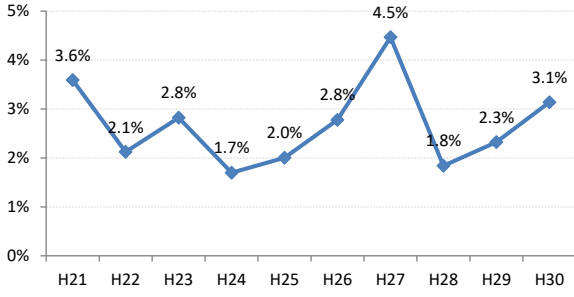
安芸高田市



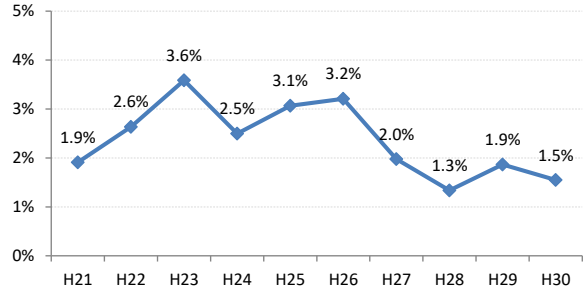
江田島市



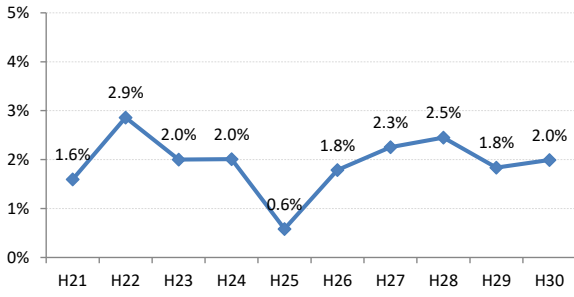
府中町



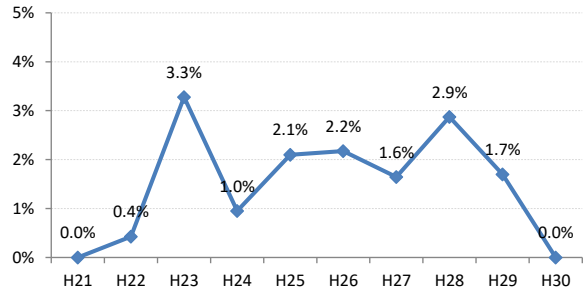
海田町



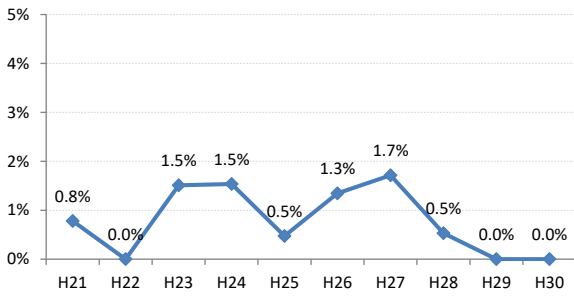
熊野町



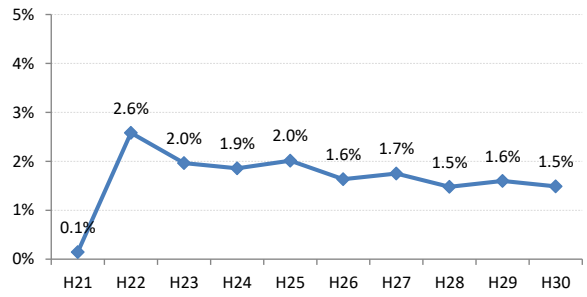
坂町



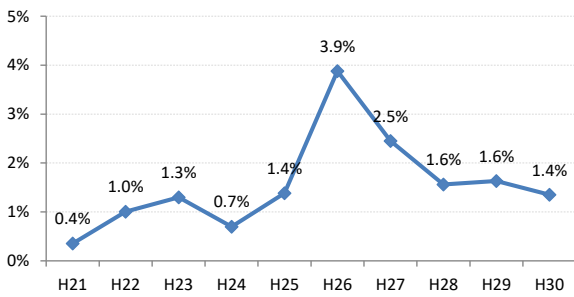
安芸太田町



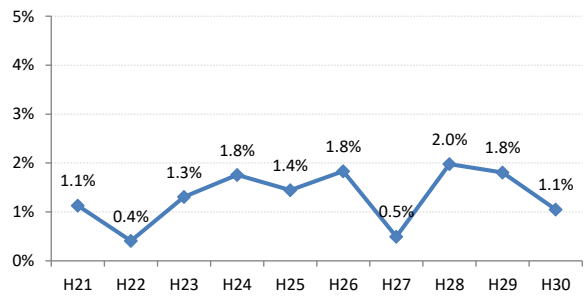
北広島町



大崎上島町



世羅町



神石高原町

