



Miike Recycling System

Miike's total engineering for custom design and manufacturing.
Production of various shredders, crushers, sorters, dryers, and granulators.

Miike Corporation
www.miike.co.jp

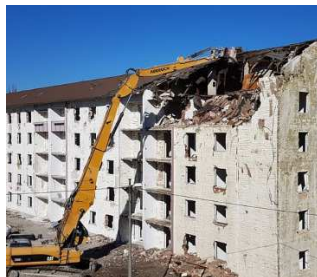
Starting in 1953 with the sawdust recycling system, the company works strictly with the valorisation of various waste types. How can we effectively utilise unused resources called « waste » is their only interest. The company designs and manufactures all equipment and machines for each recycling plant to make sure that their machines can perform to its maximum. With its extensive experiences and history, Miike knows how to create valuable resources out of your waste.

Recycling requires several steps, but Miike sees the recycling process as a single flawless flow. This is why the company designs and manufactures all processing machines that perfectly connect the steps so the treated waste can become a valuable resource.

With the experiences and the technical know-how of Miike, it is possible to propose a maximum performance within the constraints of purpose, budget, and space. Also, the maintenance frequency is minimised.



RDF production plant: Solid fuel production from municipal solid waste and/or industrial waste. ¥



Construction & Demolition waste: Miike proposes a C&D waste recycling system that aims to recycle 90% of C&D materials by the extraction of valuable and reusable materials and the effective material recycling.

Disaster Waste Management: Using the vast experiences gained over the past 60 year, Miike supports the disaster recovery by the efficient waste recycling schemes.