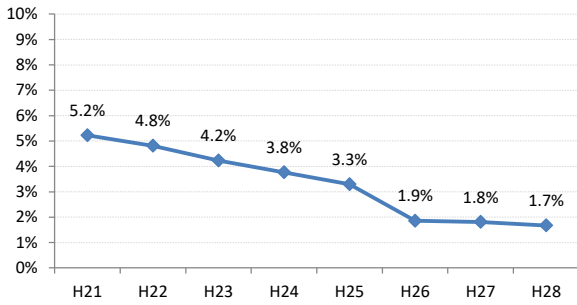


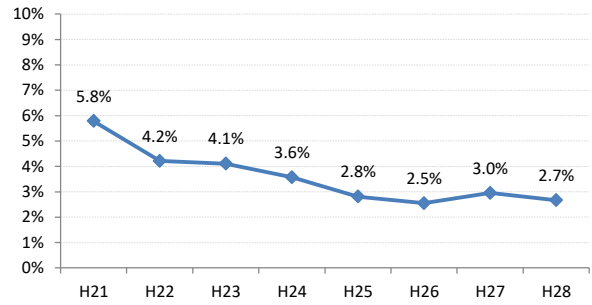
【子宮頸がん】陽性反応適中度の推移

子宮	H21	H22	H23	H24	H25	H26	H27	H28
全国	5.2%	4.8%	4.2%	3.8%	3.3%	1.9%	1.8%	1.7%
広島県	5.8%	4.2%	4.1%	3.6%	2.8%	2.5%	3.0%	2.7%
広島市	5.2%	3.1%	3.1%	1.8%	2.1%	1.8%	4.1%	2.7%
呉市	8.8%	4.9%	7.9%	3.5%	3.9%	4.7%	3.2%	3.2%
竹原市	0.0%	0.0%	18.2%	0.0%	0.0%	8.3%	0.0%	4.8%
三原市	4.3%	4.1%	4.3%	6.5%	5.2%	3.5%	7.1%	4.8%
尾道市	2.0%	0.9%	1.9%	1.9%	0.9%	0.0%	0.0%	0.0%
福山市	10.0%	8.9%	6.8%	7.0%	4.9%	2.9%	0.8%	2.9%
府中市	0.0%	0.0%	0.0%	8.3%	0.0%	0.0%	0.0%	0.0%
三次市	8.3%	12.5%	8.3%	3.4%	0.0%	0.0%	0.0%	0.0%
庄原市	6.7%	15.4%	0.0%	0.0%	0.0%	4.0%	4.5%	5.6%
大竹市	0.0%	18.8%	0.0%	5.3%	0.0%	0.0%	0.0%	0.0%
東広島市	1.5%	4.2%	0.0%	3.5%	0.7%	4.0%	0.0%	1.0%
廿日市市	6.0%	0.0%	1.0%	1.8%	3.1%	0.0%	0.0%	0.0%
安芸高田市	0.0%	0.0%	0.0%	0.0%	0.0%	0.0%	0.0%	0.0%
江田島市	25.0%	33.3%	0.0%	0.0%	0.0%	0.0%	25.0%	0.0%
府中町	0.0%	0.0%	0.0%	3.8%	3.1%	2.4%	0.0%	4.5%
海田町	4.2%	5.4%	0.0%	0.0%	0.0%	2.2%	3.8%	0.0%
熊野町	12.5%	3.8%	5.3%	0.0%	0.0%	7.7%	0.0%	0.0%
坂町	0.0%	0.0%	0.0%	0.0%	0.0%	0.0%	0.0%	8.3%
安芸太田町	0.0%	0.0%	0.0%	0.0%	0.0%	0.0%	0.0%	0.0%
北広島町	0.0%	6.7%	0.0%	0.0%	0.0%	0.0%	0.0%	0.0%
大崎上島町	0.0%	0.0%	0.0%	0.0%	0.0%	0.0%	0.0%	0.0%
世羅町	0.0%	0.0%	0.0%	9.1%	0.0%	10.0%	0.0%	7.1%
神石高原町	0.0%	0.0%	0.0%	0.0%	0.0%	0.0%	0.0%	0.0%

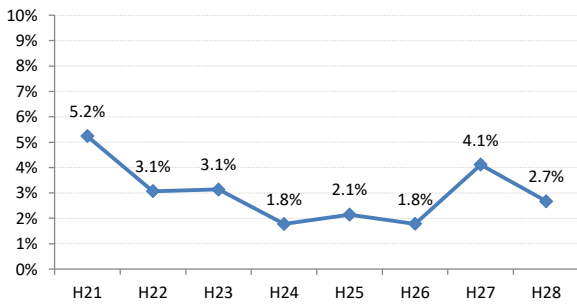
全国



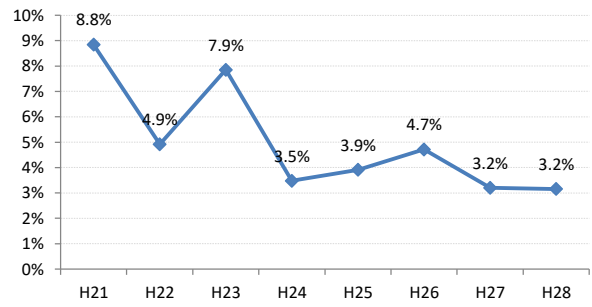
広島県



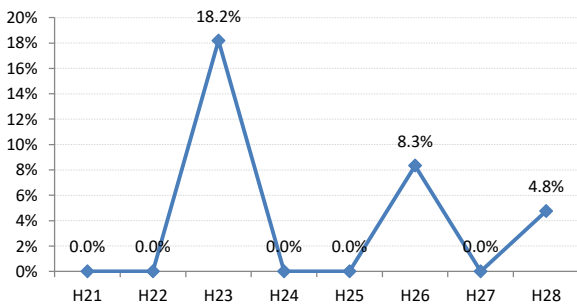
広島市



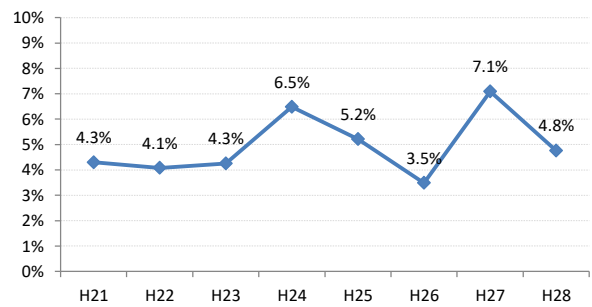
呉市



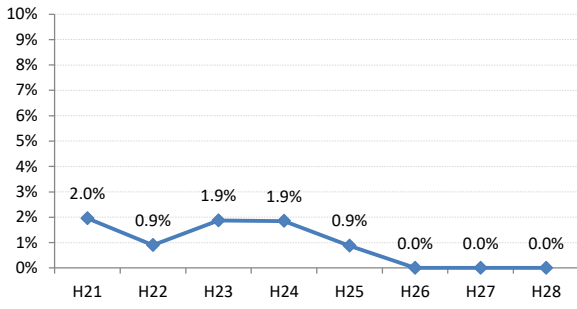
竹原市



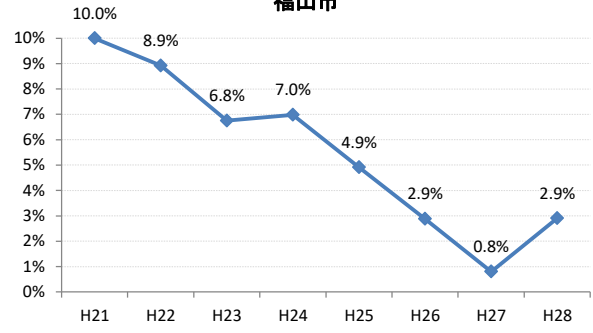
三原市



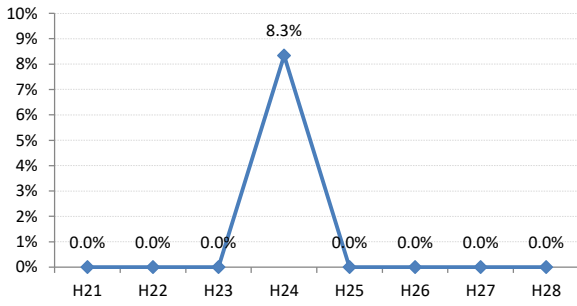
尾道市



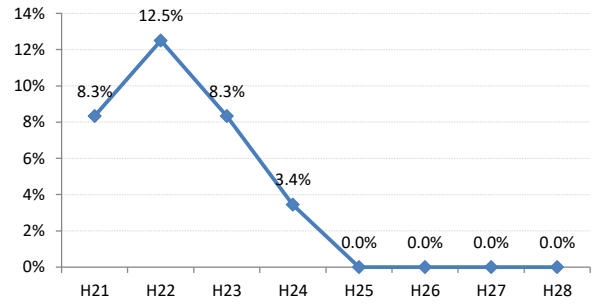
福山市



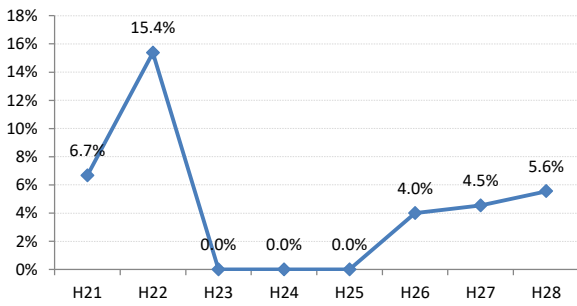
府中市



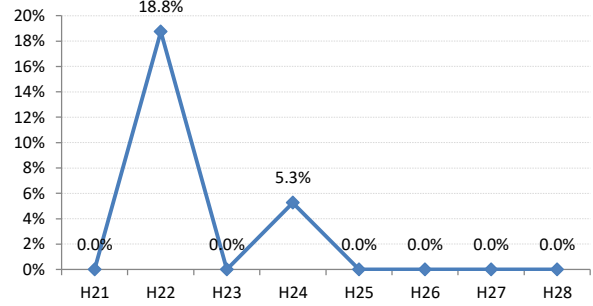
三次市



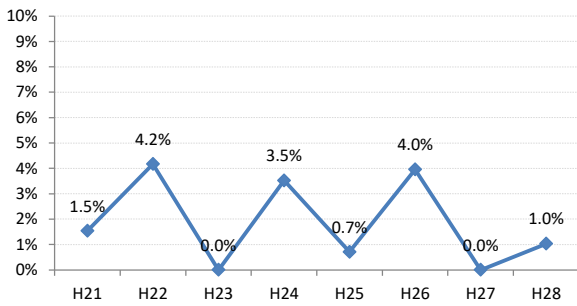
庄原市



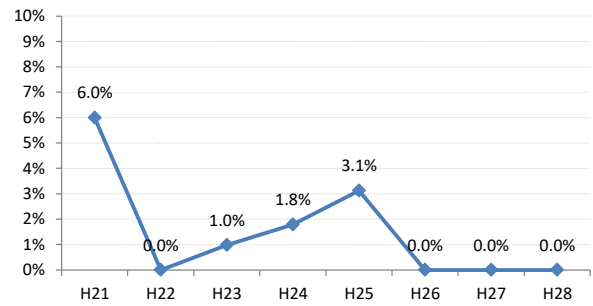
大竹市



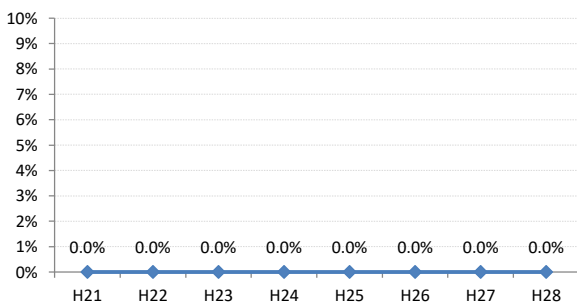
東広島市



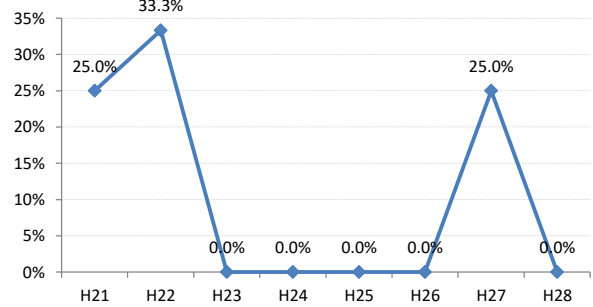
廿日市市



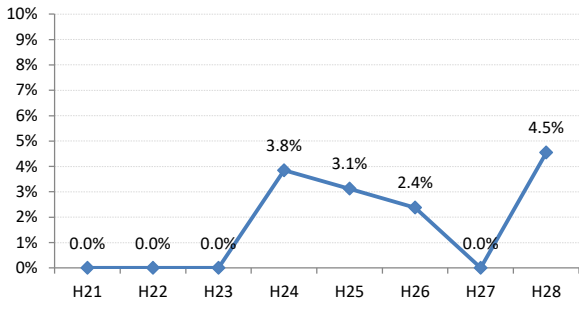
安芸高田市



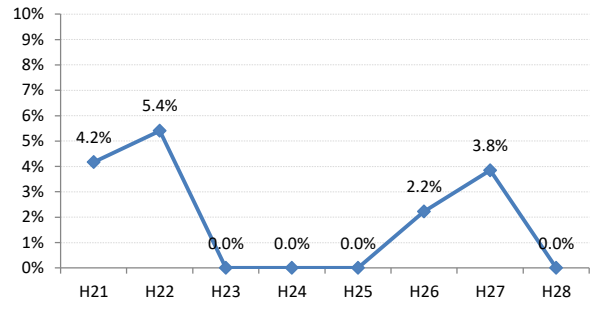
江田島市



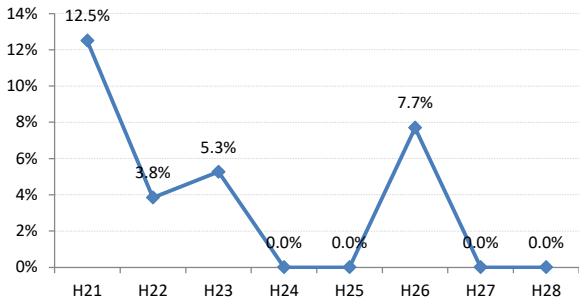
府中町



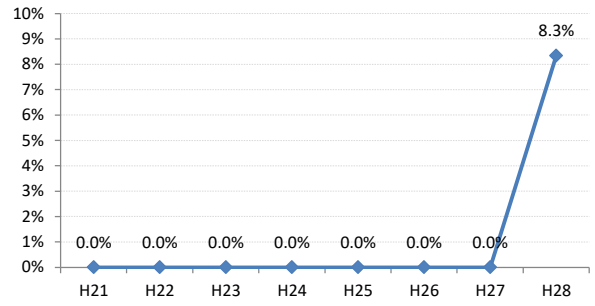
海田町



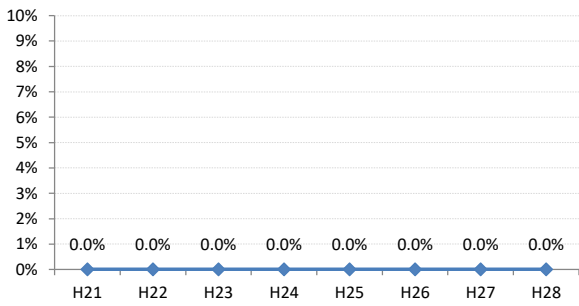
熊野町



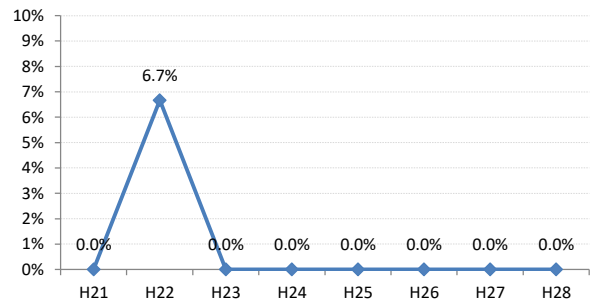
坂町



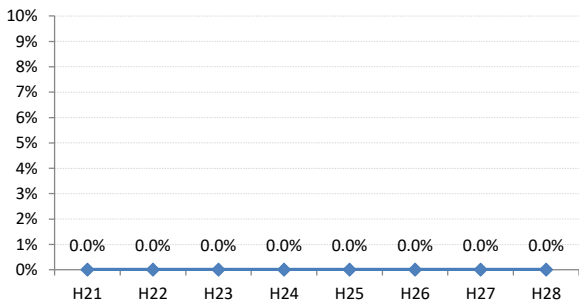
安芸太田町



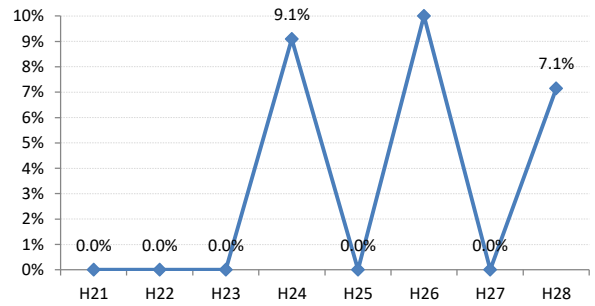
北広島町



大崎上島町



世羅町



神石高原町

