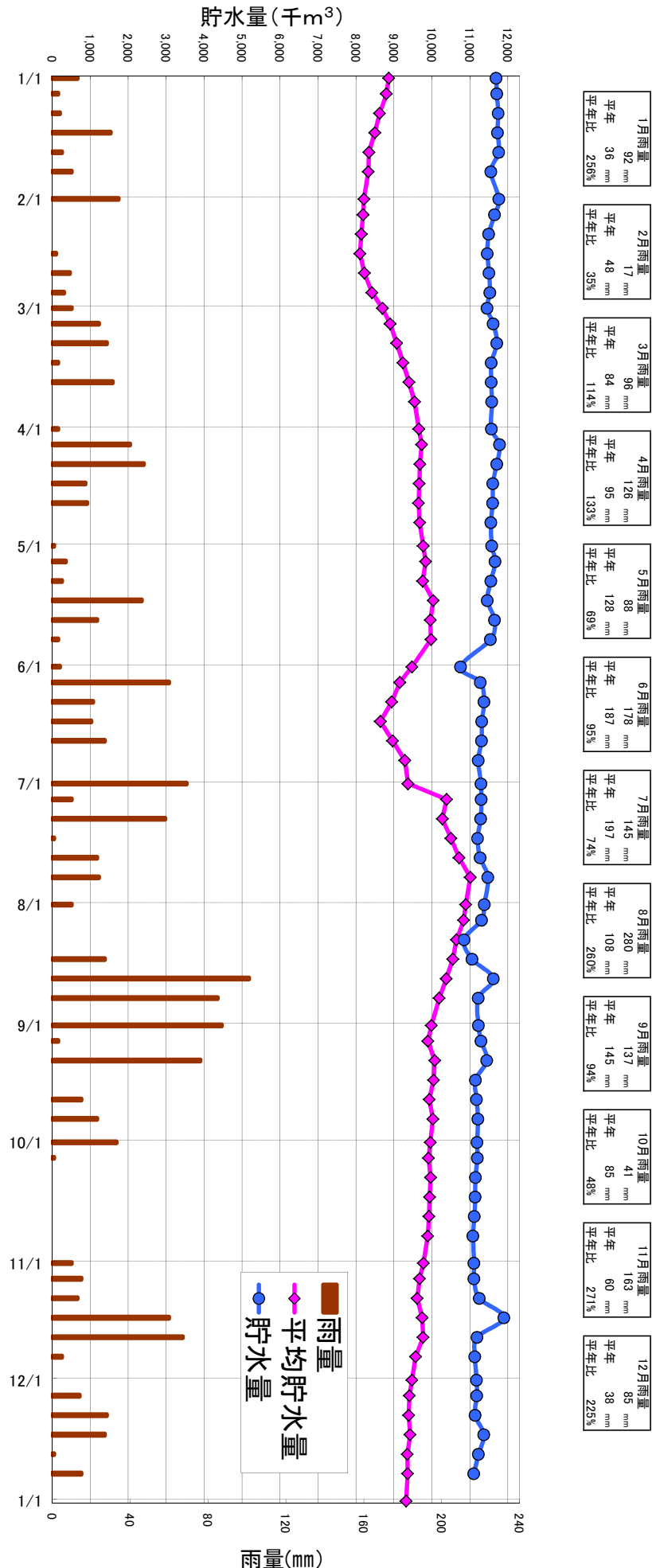


三川ダム貯水状況(平成27年)

速報値



月日	貯水量	貯水率	平均貯水量	雨量
H27/1/1	11,694	95.0%	8,865	13
5	11,709	95.1%	8,801	3
10	11,745	95.4%	8,621	4
15	11,730	95.3%	8,498	30
20	11,760	95.6%	8,342	5
25	11,555	93.9%	8,327	10
2/1	11,767	95.6%	8,209	34
5	11,650	94.7%	8,188	
10	11,497	93.4%	8,143	
15	11,460	93.1%	8,106	2
20	11,504	93.5%	8,223	9
25	11,526	93.7%	8,420	6
3/1	11,453	93.1%	8,700	10
5	11,614	94.4%	8,899	24
10	11,709	95.1%	9,072	28
15	11,563	94.0%	9,240	3
20	11,563	94.0%	9,396	31
25	11,577	94.1%	9,542	
4/1	11,570	94.0%	9,657	3
5	11,782	95.7%	9,730	40
10	11,709	95.1%	9,686	47
15	11,606	94.3%	9,667	17
20	11,599	94.3%	9,650	18
25	11,555	93.9%	9,679	
5/1	11,577	94.1%	9,770	1
5	11,665	94.8%	9,835	7
10	11,555	93.9%	9,759	5
15	11,460	93.1%	10,035	46
20	11,650	94.7%	9,959	23
25	11,541	93.8%	9,974	3
6/1	10,756	87.4%	9,475	4
5	11,278	91.6%	9,156	60
10	11,373	92.4%	8,942	21
15	11,314	91.9%	8,644	20
20	11,307	91.9%	8,965	27
25	11,220	91.2%	9,290	
7/1	11,293	91.8%	9,372	69
5	11,300	91.8%	10,387	10
10	11,285	91.7%	10,276	58
15	11,205	91.1%	10,503	1
20	11,271	91.6%	10,714	23
25	11,475	93.2%	11,012	24
8/1	11,380	92.5%	10,888	10
5	11,307	91.9%	10,834	
10	10,847	88.1%	10,648	
15	11,059	89.9%	10,549	27
20	11,621	94.4%	10,378	101
25	11,220	91.2%	10,191	85
9/1	11,227	91.2%	9,987	87
5	11,293	91.8%	9,897	3
10	11,446	93.0%	10,075	76
15	11,147	90.6%	10,047	
20	11,176	90.8%	9,930	15
25	11,212	91.1%	10,028	23
10/1	11,190	90.9%	9,957	33
5	11,198	91.0%	9,909	1
10	11,147	90.6%	9,966	
15	11,139	90.5%	9,941	
20	11,117	90.3%	9,922	
25	11,081	90.0%	9,889	
11/1	11,110	90.3%	9,775	10
5	11,110	90.3%	9,676	15
10	11,249	91.4%	9,613	13
15	11,898	96.7%	9,745	60
20	11,190	90.9%	9,768	67
25	11,132	90.5%	9,571	5
12/1	11,176	90.8%	9,476	
5	11,183	90.9%	9,406	14
10	11,139	90.5%	9,386	28
15	11,366	92.4%	9,426	27
20	11,227	91.2%	9,352	1
25	11,103	90.2%	9,361	15
H28.1.1	11,227	91.2%	9,320	

貯水量：当日9:00現在(千m³)

雨量：半月毎の雨量合計(mm)

平均貯水量：当日9:00における過去10年(H17~H26)の平均値(千m³)

平年：1981(S56)~2010(H22)の30年間の平均値