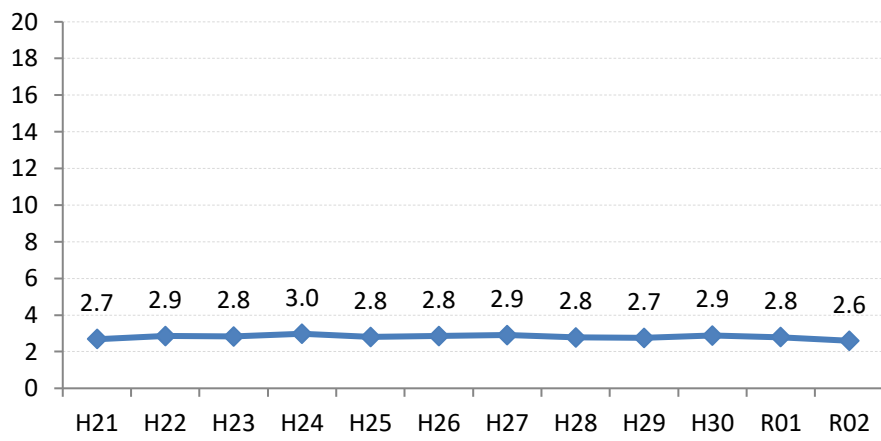


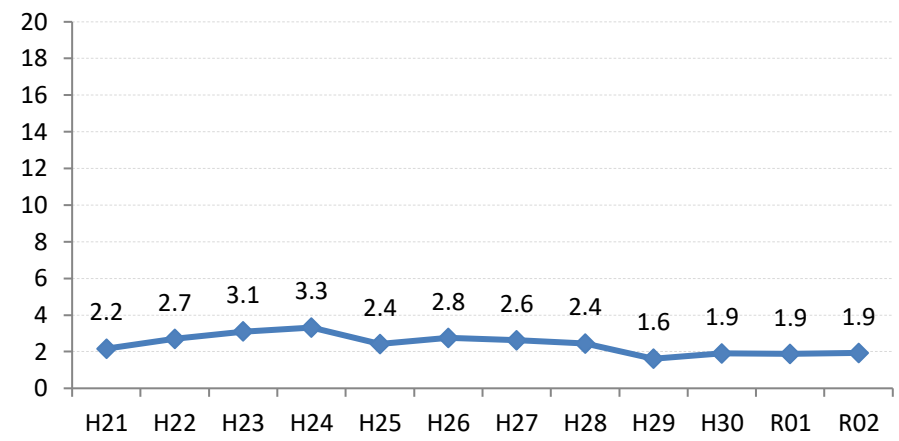
【大腸がん】陽性反応的中度の推移

大腸	H21	H22	H23	H24	H25	H26	H27	H28	H29	H30	R01	R02
全国	2.7	2.9	2.8	3.0	2.8	2.8	2.9	2.8	2.7	2.9	2.8	2.6
広島県	2.2	2.7	3.1	3.3	2.4	2.8	2.6	2.4	1.6	1.9	1.9	1.9
広島市	1.8	3.1	3.3	3.0	1.1	2.8	2.7	2.6	0.3	0.8	1.8	2.5
呉市	3.6	4.1	4.8	3.6	4.6	4.4	3.7	2.9	0.7	1.9	0.4	0.6
竹原市	7.7	0.0	3.0	3.2	5.8	1.7	3.4	5.1	1.3	7.5	0.0	0.0
三原市	1.9	1.1	7.1	1.6	0.0	1.6	2.9	4.3	2.3	2.9	0.8	3.7
尾道市	2.3	1.9	2.2	2.9	2.7	1.2	2.4	2.5	2.3	1.7	2.3	1.7
福山市	3.0	3.2	3.1	3.6	3.2	2.8	2.4	2.3	2.2	3.9	1.8	1.6
府中市	2.5	2.5	4.3	5.4	3.6	5.9	0.8	0.7	3.5	5.7	4.1	1.1
三次市	0.0	2.7	0.7	4.9	4.0	2.7	1.5	1.9	2.6	1.4	3.5	1.2
庄原市	0.0	0.0	0.6	2.0	0.0	1.7	4.5	1.6	1.2	1.5	2.8	2.6
大竹市	0.0	0.0	0.0	3.0	0.9	2.3	1.6	0.0	1.8	0.0	0.9	0.0
東広島市	2.3	3.0	1.6	2.7	3.7	2.2	1.1	3.6	2.8	1.3	0.9	1.1
廿日市市	2.3	3.0	1.6	7.6	4.2	3.5	2.2	2.2	4.3	1.6	3.5	1.8
安芸高田市	0.0	0.0	2.6	1.4	3.3	4.2	0.8	5.7	3.3	1.2	1.3	0.0
江田島市	5.9	0.0	5.3	5.5	3.6	4.1	8.1	1.1	5.5	1.6	1.6	0.0
府中町	0.0	2.9	4.1	1.7	4.3	3.3	2.4	0.0	6.0	7.4	2.2	5.1
海田町	12.5	4.2	11.4	3.8	2.6	6.5	1.3	0.0	2.7	4.3	5.5	1.7
熊野町	3.2	1.9	6.5	6.8	5.6	3.1	8.3	1.9	7.1	5.6	3.1	
坂町	0.0	0.0	0.0	0.0	0.0	2.4	0.0	0.0	0.0	0.0	0.0	0.0
安芸太田町	0.0	0.0	0.0	2.7	2.7	4.0	5.6	0.0	0.0	0.0	3.1	4.5
北広島町	0.0	0.0	0.0	6.4	5.8	2.2	4.2	1.2	1.4	0.0	0.0	0.0
大崎上島町	0.0	3.2	0.0	0.0	0.0	5.6	0.0	0.0	0.0	0.0	13.3	0.0
世羅町	3.7	10.5	5.1	1.1	0.0	1.1	4.6	2.1	1.2	0.0	1.6	0.0
神石高原町	0.0	0.0	6.3	0.0	8.7	5.9	1.6	1.5	4.4	5.9	0.0	0.0

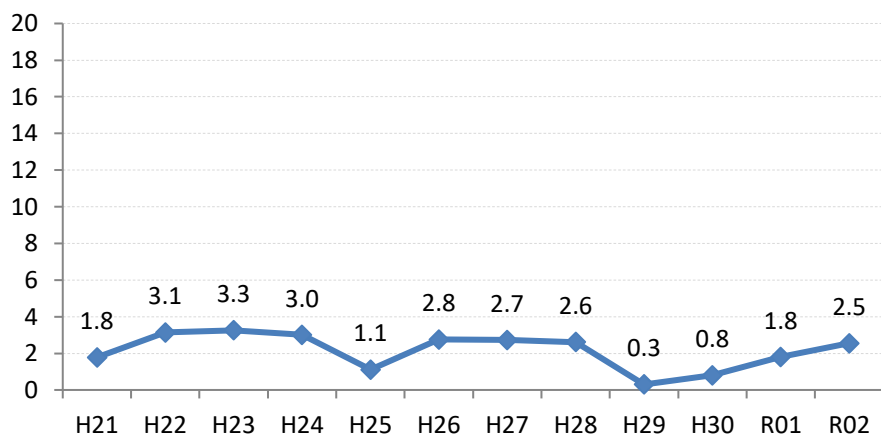
全国



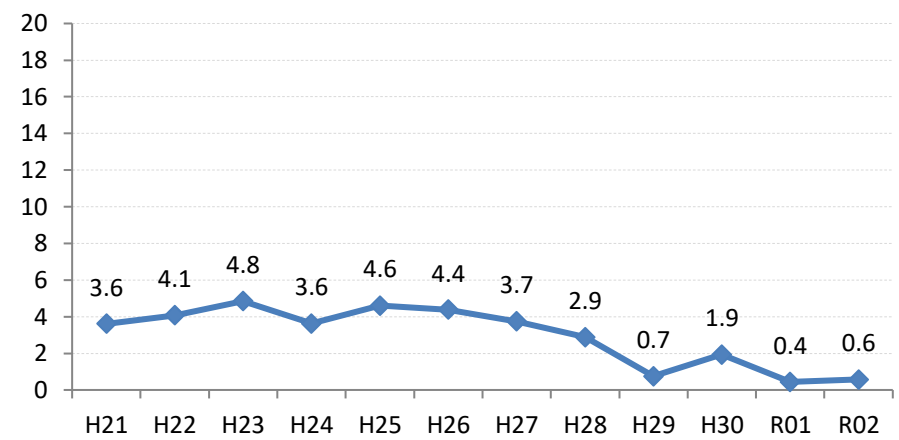
広島県



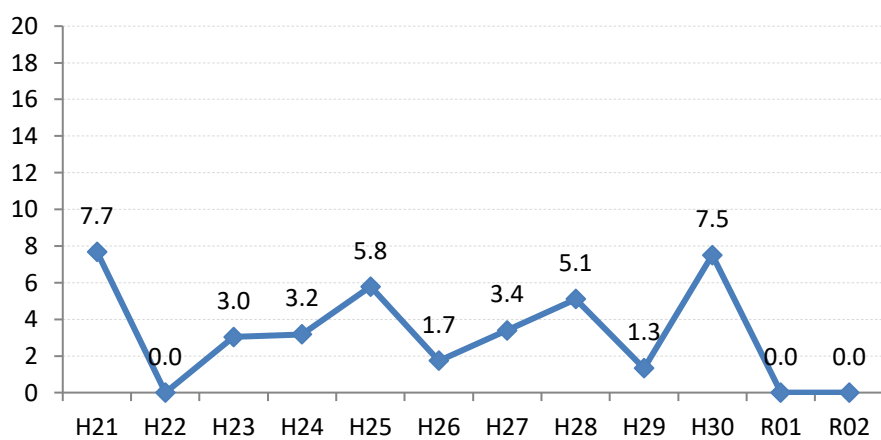
広島市



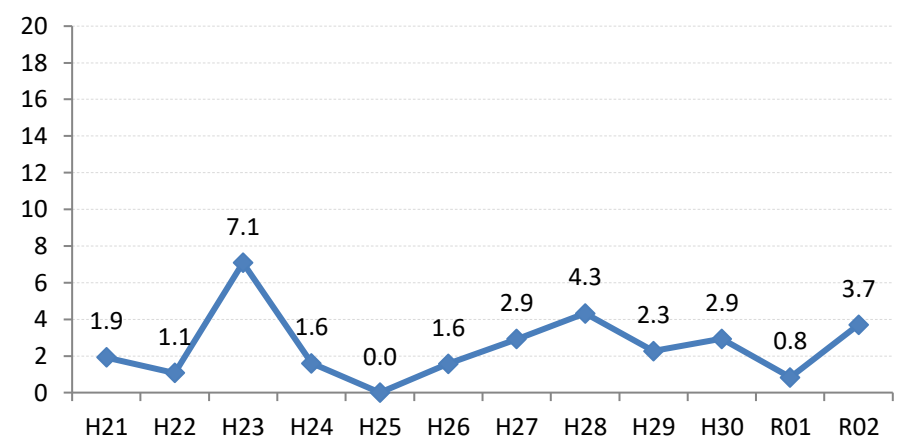
呉市



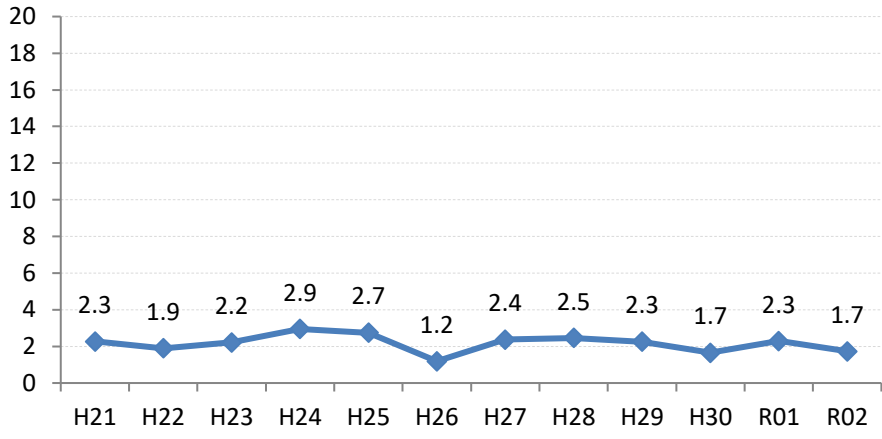
竹原市



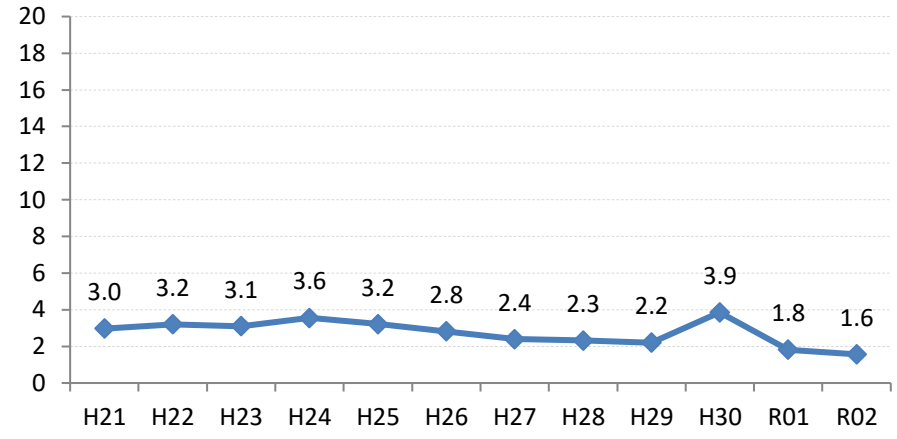
三原市



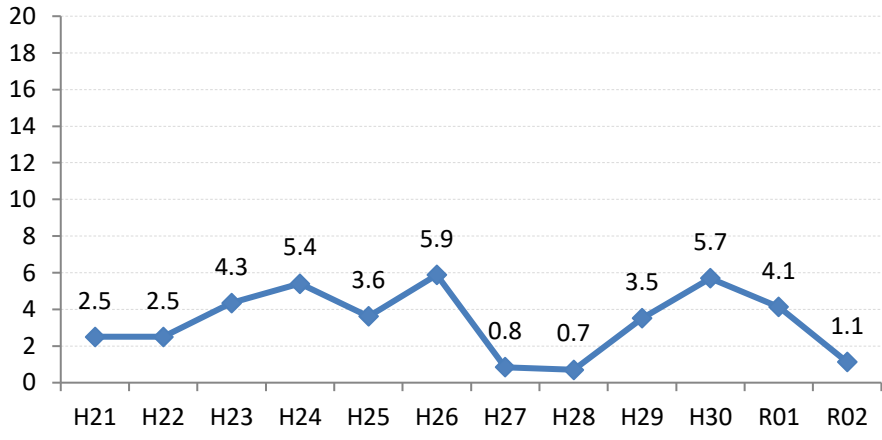
尾道市



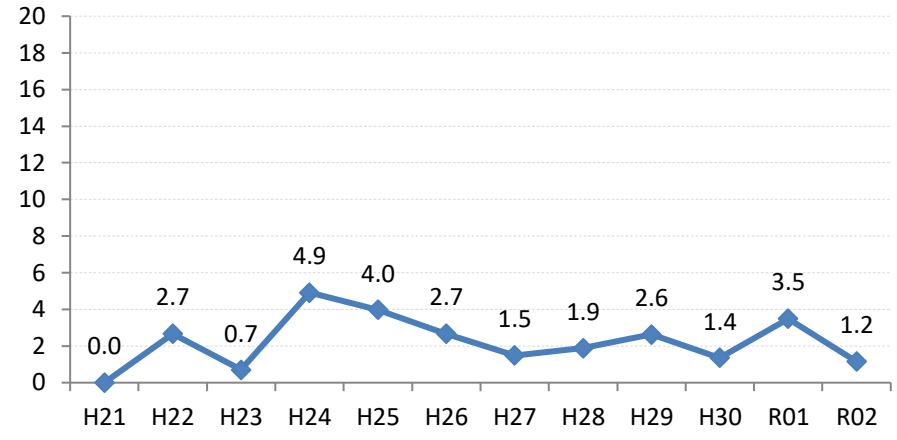
福山市



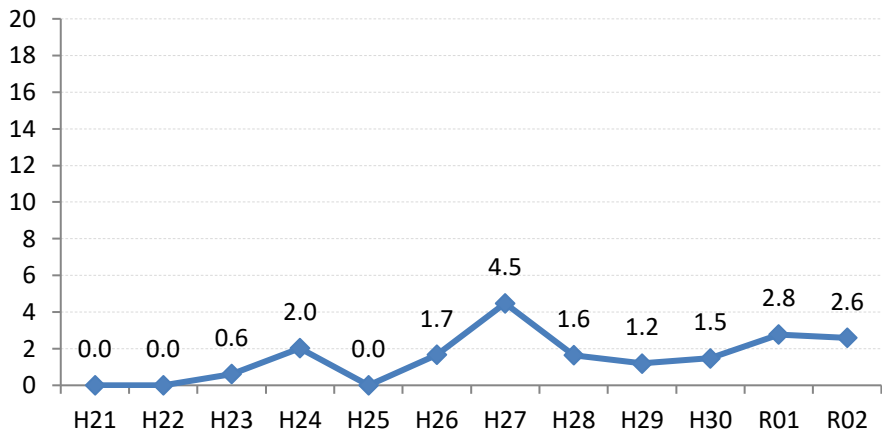
府中市



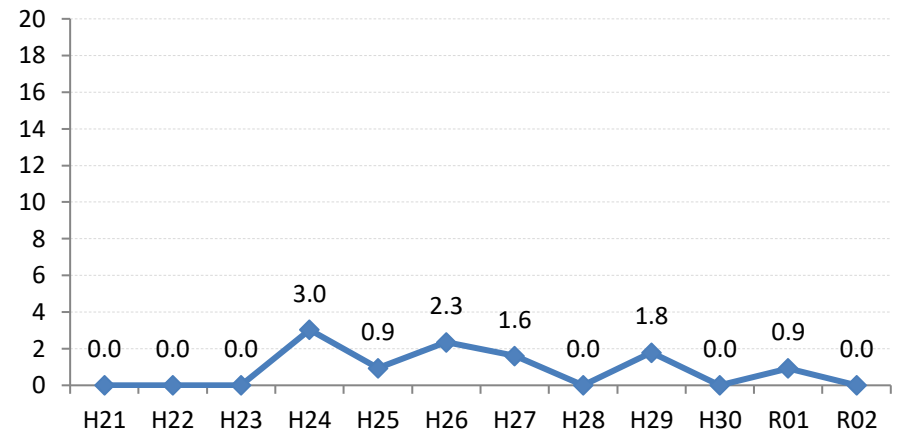
三次市



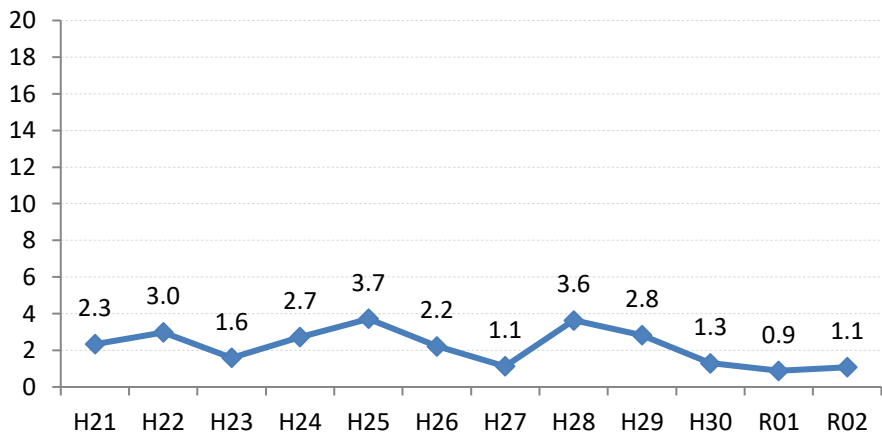
庄原市



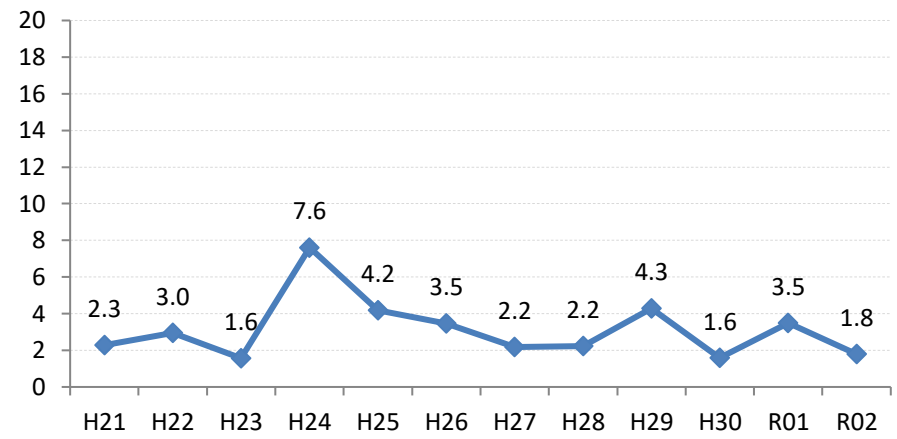
大竹市



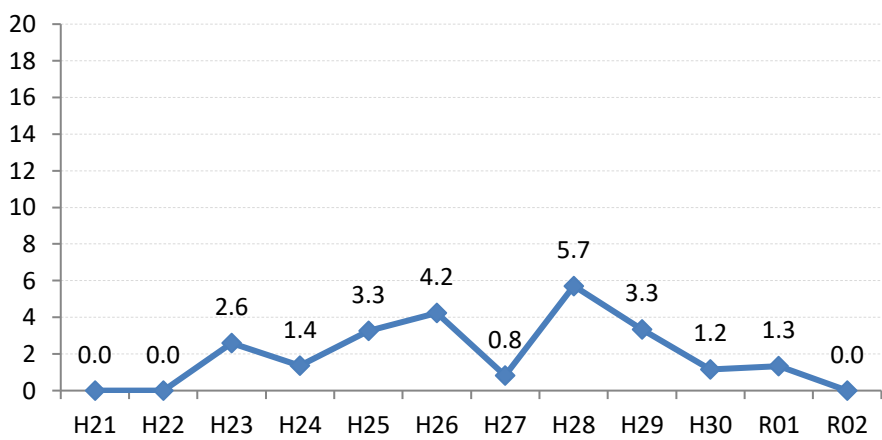
東広島市



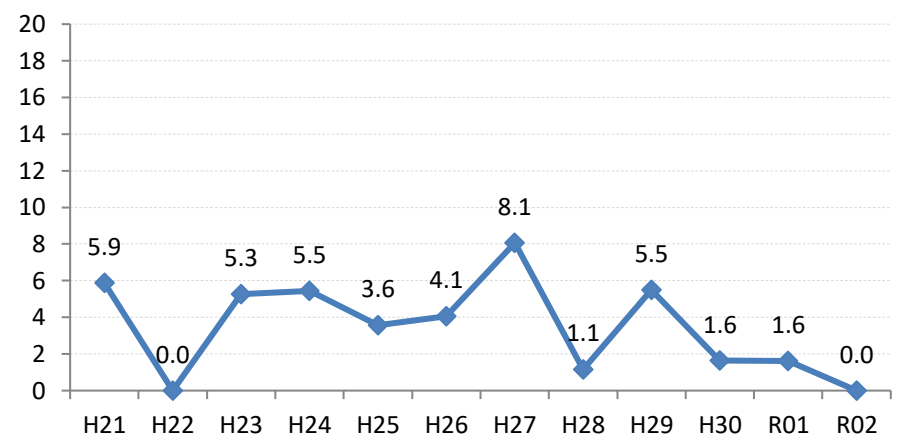
廿日市市



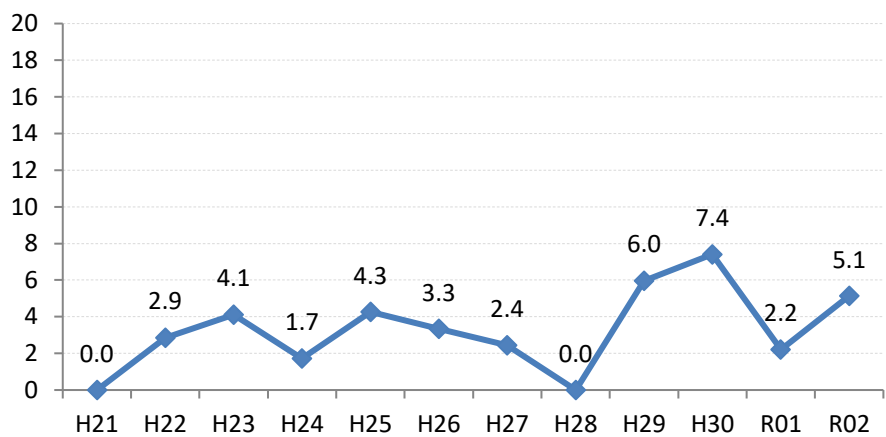
安芸高田市



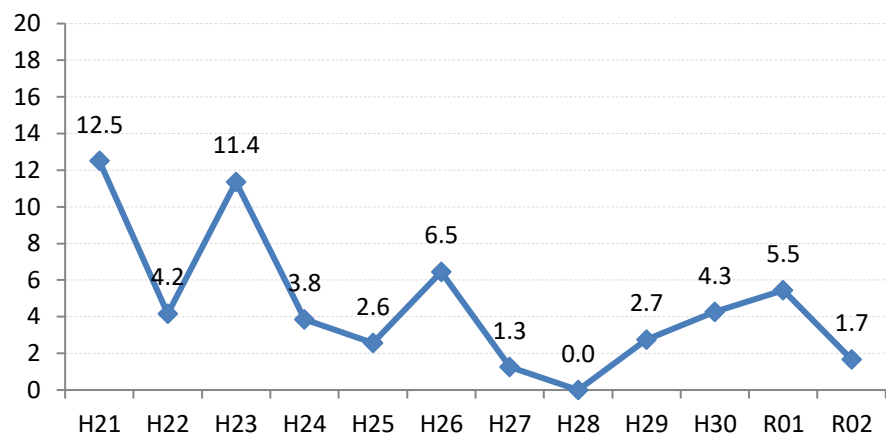
江田島市



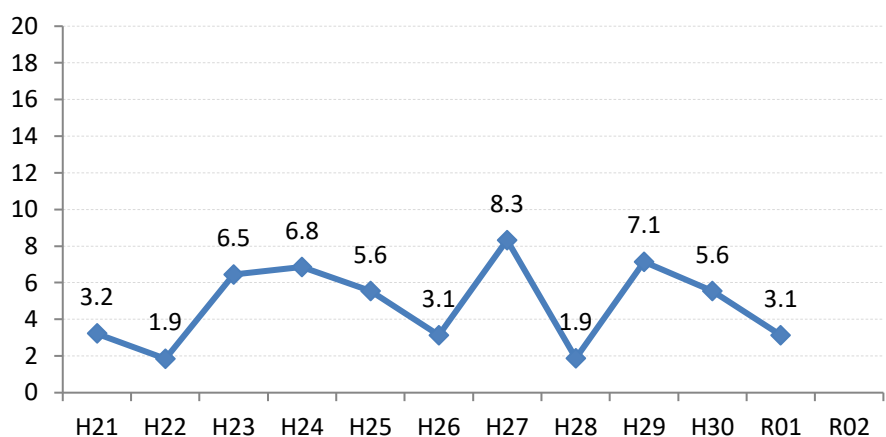
府中町



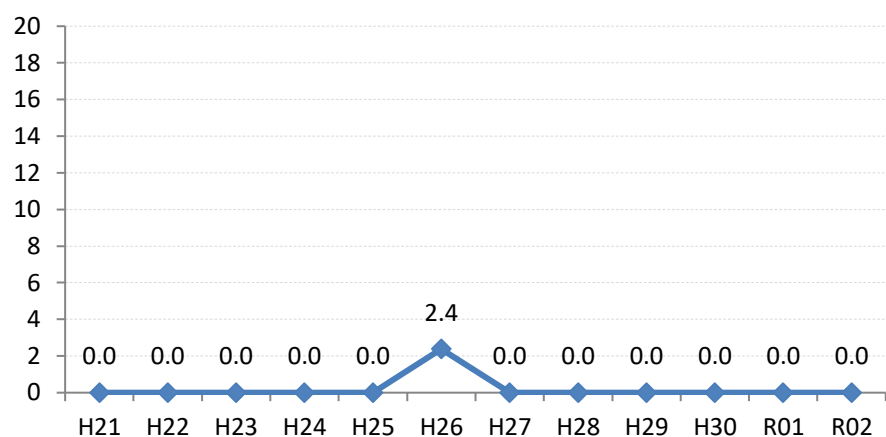
海田町



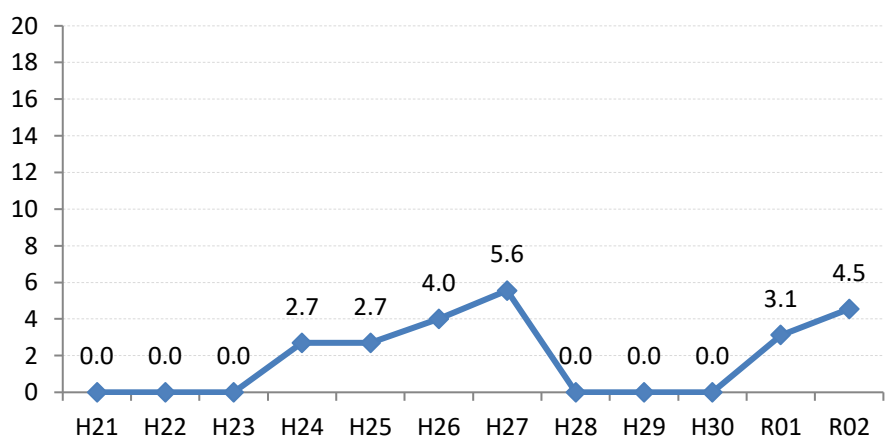
熊野町



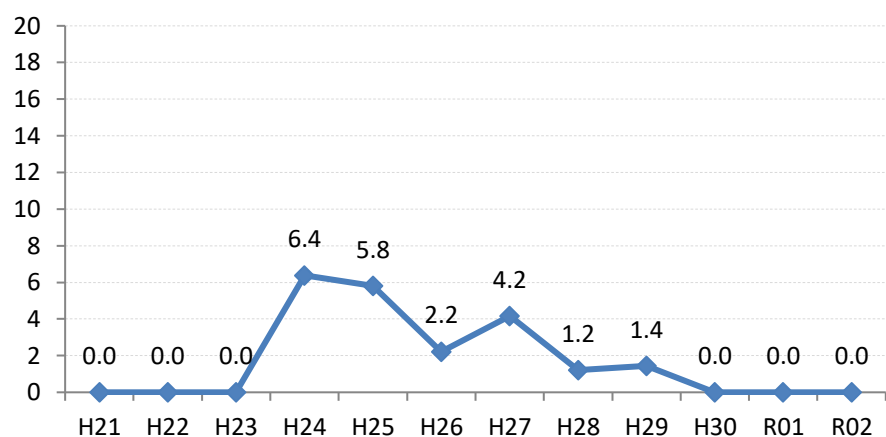
坂町



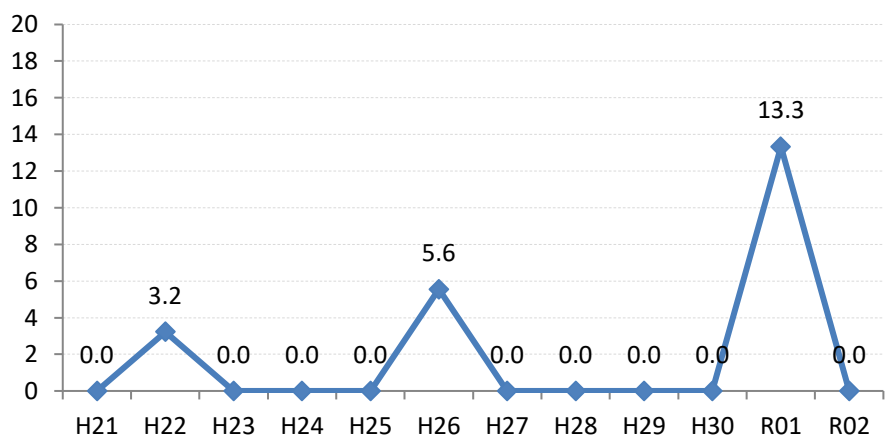
安芸太田町



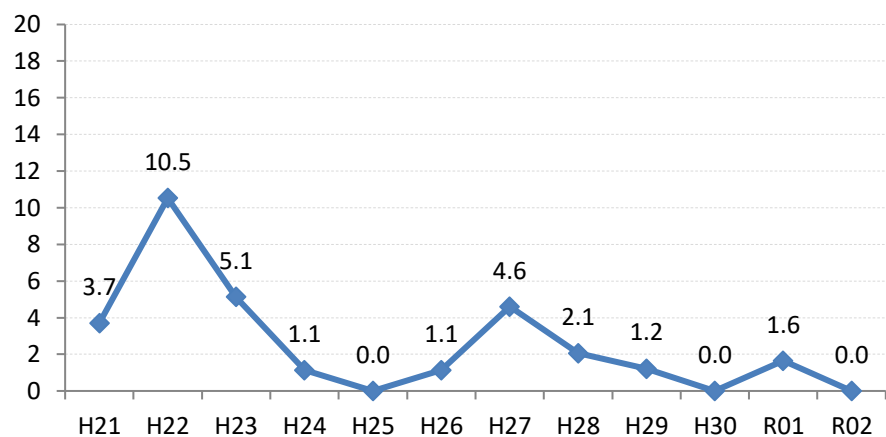
北広島町



大崎上島町



世羅町



神石高原町

