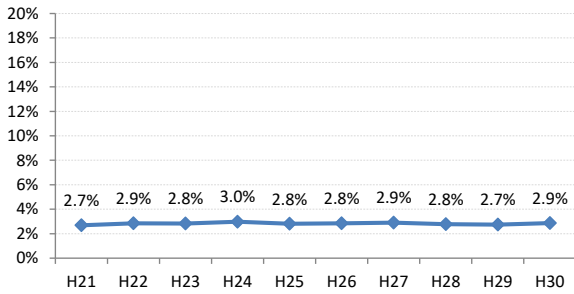


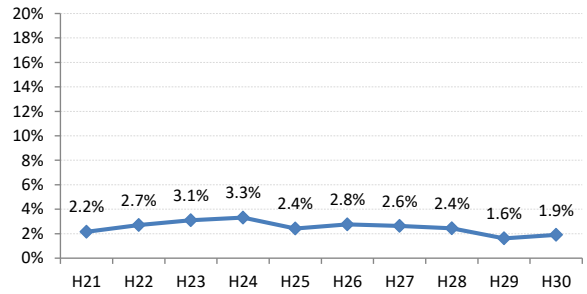
【大腸がん】陽性反応の集中度の推移

大腸	H21	H22	H23	H24	H25	H26	H27	H28	H29	H30
全国	2.7%	2.9%	2.8%	3.0%	2.8%	2.8%	2.9%	2.8%	2.7%	2.9%
広島県	2.2%	2.7%	3.1%	3.3%	2.4%	2.8%	2.6%	2.4%	1.6%	1.9%
広島市	1.8%	3.1%	3.3%	3.0%	1.1%	2.8%	2.7%	2.6%	0.3%	0.8%
呉市	3.6%	4.1%	4.8%	3.6%	4.6%	4.4%	3.7%	2.9%	0.7%	1.9%
竹原市	7.7%	0.0%	3.0%	3.2%	5.8%	1.7%	3.4%	5.1%	1.3%	7.5%
三原市	1.9%	1.1%	7.1%	1.6%	0.0%	1.6%	2.9%	4.3%	2.3%	2.9%
尾道市	2.3%	1.9%	2.2%	2.9%	2.7%	1.2%	2.4%	2.5%	2.3%	1.7%
福山市	3.0%	3.2%	3.1%	3.6%	3.2%	2.8%	2.4%	2.3%	2.2%	3.9%
府中市	2.5%	2.5%	4.3%	5.4%	3.6%	5.9%	0.8%	0.7%	3.5%	5.7%
三次市	0.0%	2.7%	0.7%	4.9%	4.0%	2.7%	1.5%	1.9%	2.6%	1.4%
庄原市	0.0%	0.0%	0.6%	2.0%	0.0%	1.7%	4.5%	1.6%	1.2%	1.5%
大竹市	0.0%	0.0%	0.0%	3.0%	0.9%	2.3%	1.6%	0.0%	1.8%	0.0%
東広島市	2.3%	3.0%	1.6%	2.7%	3.7%	2.2%	1.1%	3.6%	2.8%	0.0%
廿日市市	2.3%	3.0%	1.6%	7.6%	4.2%	3.5%	2.2%	2.2%	4.3%	1.6%
安芸高田市	0.0%	0.0%	2.6%	1.4%	3.3%	4.2%	0.8%	5.7%	3.3%	1.2%
江田島市	5.9%	0.0%	5.3%	5.5%	3.6%	4.1%	8.1%	1.1%	5.5%	1.6%
府中町	0.0%	2.9%	4.1%	1.7%	4.3%	3.3%	2.4%	0.0%	6.0%	7.4%
海田町	12.5%	4.2%	11.4%	3.8%	2.6%	6.5%	1.3%	0.0%	2.7%	4.3%
熊野町	3.2%	1.9%	6.5%	6.8%	5.6%	3.1%	8.3%	1.9%	7.1%	5.6%
坂町	0.0%	0.0%	0.0%	0.0%	0.0%	2.4%	0.0%	0.0%	0.0%	0.0%
安芸太田町	0.0%	0.0%	0.0%	2.7%	2.7%	4.0%	5.6%	0.0%	0.0%	0.0%
北広島町	0.0%	0.0%	0.0%	6.4%	5.8%	2.2%	4.2%	1.2%	1.4%	0.0%
大崎上島町	0.0%	3.2%	0.0%	0.0%	0.0%	5.6%	0.0%	0.0%	0.0%	0.0%
世羅町	3.7%	10.5%	5.1%	1.1%	0.0%	1.1%	4.6%	2.1%	1.2%	0.0%
神石高原町	0.0%	0.0%	6.3%	0.0%	8.7%	5.9%	1.6%	1.5%	4.4%	5.9%

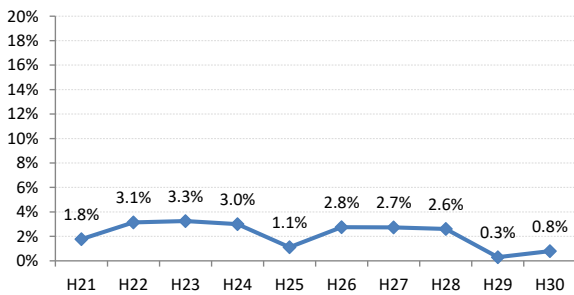
全国



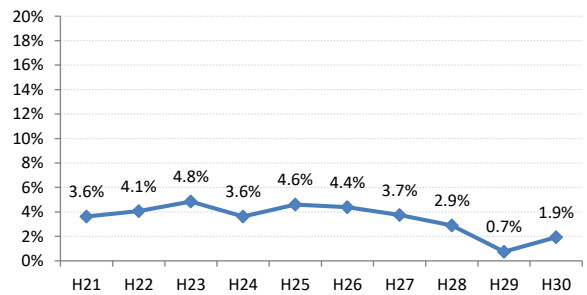
広島県



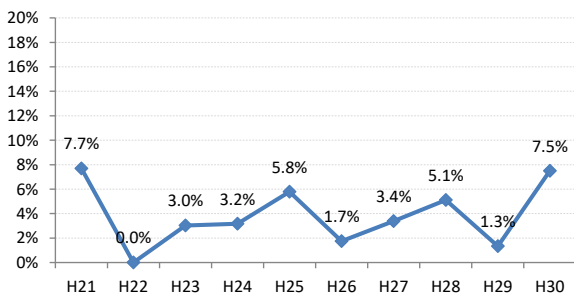
広島市



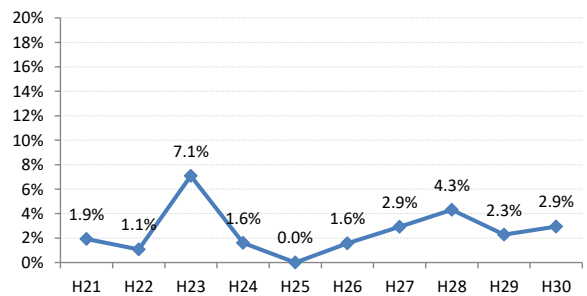
呉市



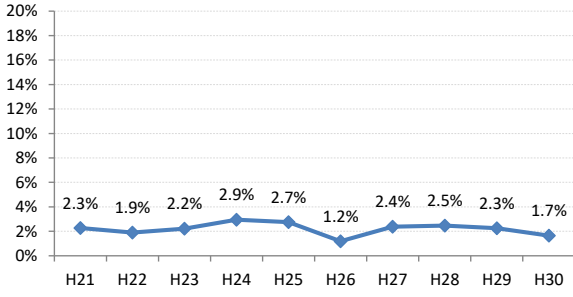
竹原市



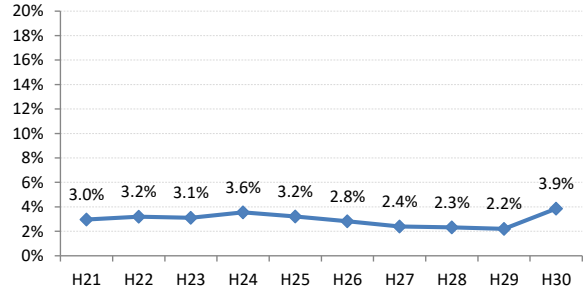
三原市



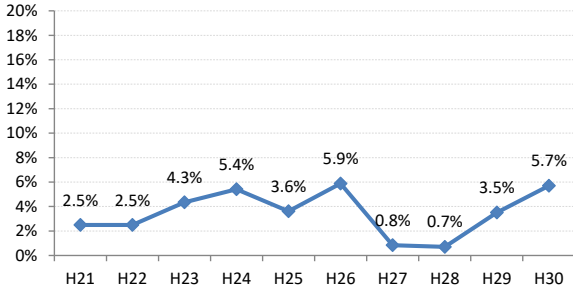
尾道市



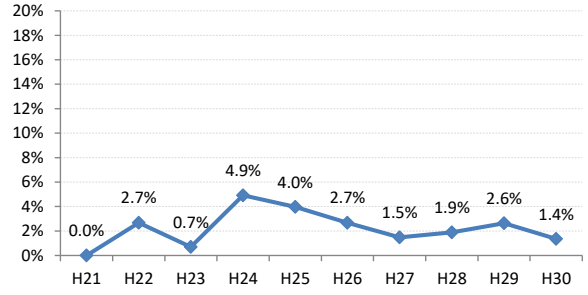
福山市



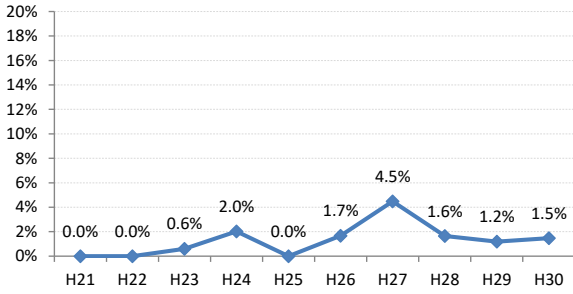
府中市



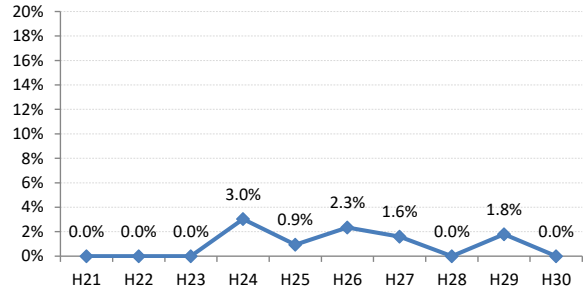
三次市



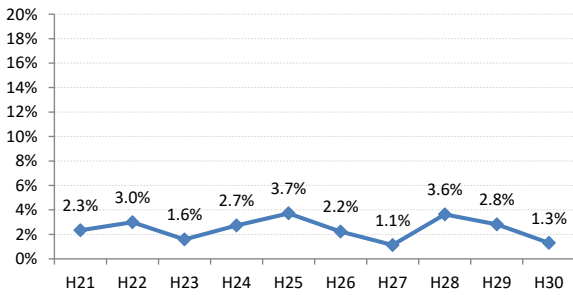
庄原市



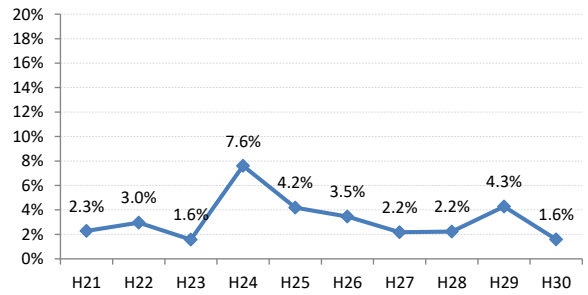
大竹市



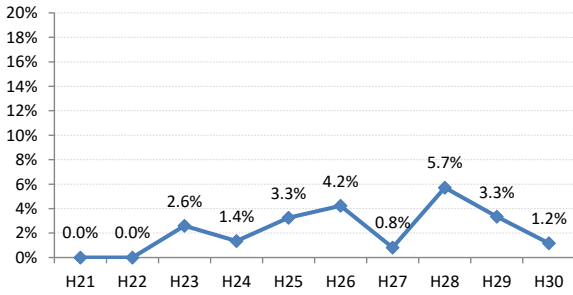
東広島市



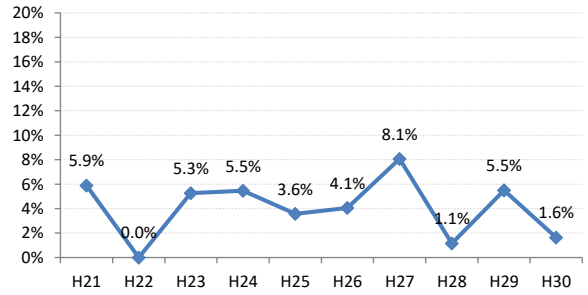
廿日市市



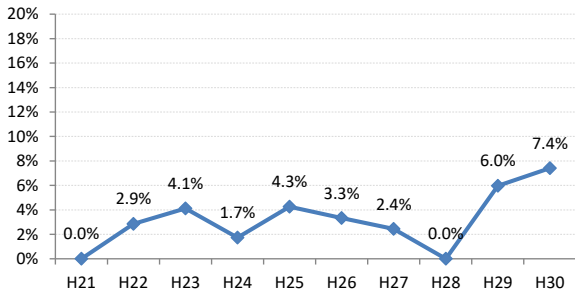
安芸高田市



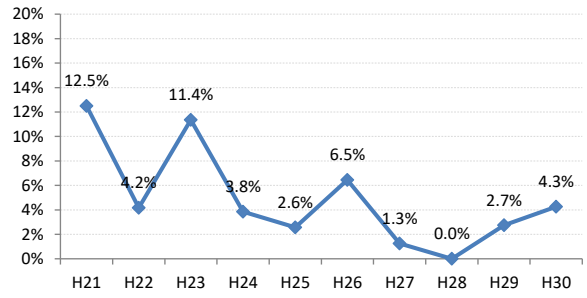
江田島市



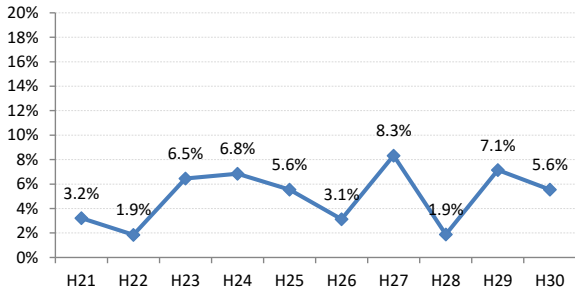
府中町



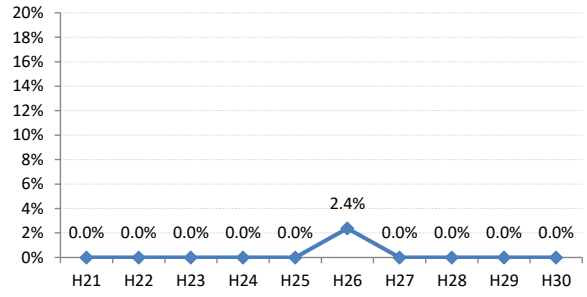
海田町



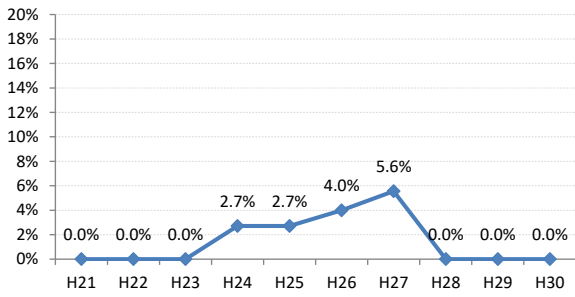
熊野町



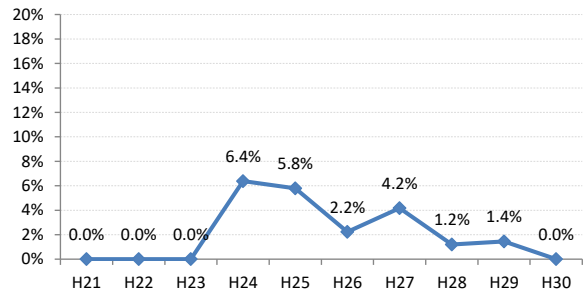
坂町



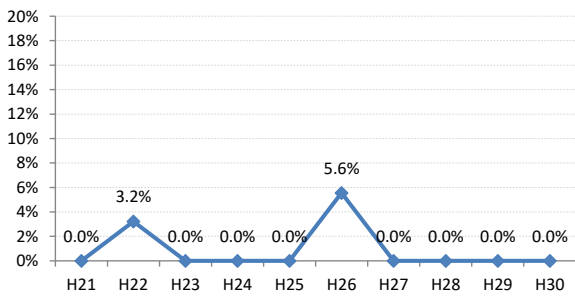
安芸太田町



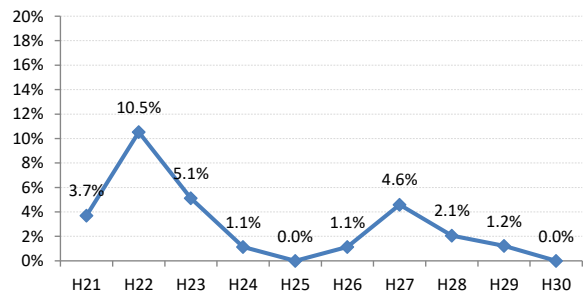
北広島町



大崎上島町



世羅町



神石高原町

